



**Ronald K. Brown/EVIDENCE, A Dance Company
TECHNICAL RIDER**

This technical rider is an integral part of the contractual agreement between _____
(The Presenter) and **Ronald K. Brown/EVIDENCE, A Dance Company (The Company)** for the
following performance or residency: _____.

All personnel, facilities, equipment, and materials described in this Technical Rider must be provided by the Presenter at the Presenter's sole expense, except where specifically noted as provided by the Company.

ANY VARIATIONS FROM THE SPECIFICATIONS OF THIS TECHNICAL RIDER MUST BE NOTED DIRECTLY IN THE BODY OF THE DOCUMENT AND BE MUTUALLY AGREED UPON BY THE COMPANY AND THE PRESENTER AS INDICATED BY BOTH PARTIES' INITIALS NEXT TO THE ALTERATION.

GENERAL INFORMATION

RONALD K. BROWN/EVIDENCE, A DANCE COMPANY travels with Artistic Director, Associate Artistic Director, Technical Director, Production Assistant and generally **seven (7) to eleven (11) dancers.**

The Presenter must provide performance venue, stage, lighting system, sound system, masking, soft goods, black marley dance floor, and technical crew. Hotel to stay, parking for both hotel and performance venue must be arranged and provided by the Presenter.

The Company requires, without exception, that all preparation to the stage be completed per the Company's plans prior to the arrival of the Company This includes: all soft goods hung in the proper position; all lights hung, circuited, colored, & patched; dance floor laid & taped; and sound system installed & calibrated.

CONTACT INFORMATION

Arcell Cabuag	Associate Artistic Director	(646) 242-5993	arcell@evidencedance.com
Jane Penn	Interim Managing Director	(919) 813-6092	jane@evidencedance.com
Tsubasa Kamei	Technical Director / Resident Lighting Designer	(646) 753-2700	tsubasakamei.design@gmail.com
Sophie Myrtil-McCourty	Lotus Arts Management	(347) 721-8724	sophie@lotusartsmgmt.com

1. BASIC FACILITY REQUIREMENTS

A. Venue & Stage Minimum Requirements - Please see Appendix A

The Production is intended for presentation in an indoor proscenium theatre. Typical minimum stage specifications are listed below, although it is possible to accommodate performances outside of these basic parameters. Please discuss with the Company.

- Stage size (w/ wings): 60' feet (18m) wide x 40' feet (12m) deep
- Dancing area: 43' feet (13m) wide x 30' feet (9m) deep from the plaster line to black backdrop
- Crossover: 3' feet (1m) minimum depth between the last working line set and the back wall, free of obstructions, for a crossover appropriate for dancers with bare feet
- Pipe (Batten) length: 60' feet (18m)

B. Masking Requirements - Please see Appendix A

The Presenter agrees to provide following masking items below:

- (1) House curtain and valance
- (5) Black borders (flat)
- (5) Pairs of black legs (flat)
- (1) Blackout drop/traveler
- (1) Black scrim
- (1) White cyc

C. Use

Facilities provided for the Company use must be secure, and kept for exclusive use during engagement, including load in time(s), rehearsal(s), and performance(s). Presenter agrees facilities will be clean, clear of other equipment, staffed appropriately, and maintained in good working order throughout the engagement.

D. Floor Requirements

The floor shall be of resilient material, preferably of **sprung wood**. Under no circumstances will the Company perform on a floor laid directly over concrete, stone or tile.

The Presenter agrees to provide a **black marley dance floor** or equivalent laid according to the lighting/masking plan, extending eight (8) feet off stage right and stage left, covering from apron to upstage backdrop, and black gaffers tape, and/or black marley vinyl dance floor tape, for laying the floor.

The entire stage and backstage areas shall be swept and damp-mopped thirty (30) minutes prior to any rehearsal of performance. **The stage must be level and cleared of nails, tacks, staples and other protrusions** that may cause injury to dancers' bare feet. Large cracks resulting from traps or other floor deviations shall be taped or repaired in such a way as to eliminate the possibility of foot injury prior to the company's arrival.

E. Temperature

The performance space and backstage area must be heated to a minimum of **seventy-four (74) degrees Fahrenheit (23.3 degrees Celsius)** eight (8) hours prior to any performance in which dancers will participate.

F. Rehearsal Space

The Company also requests studio rehearsal space for three (3) to four (4) hours on any non-theater, non-travel day to keep the Company rehearsed and limber in order to give the best performance possible. Under no circumstances will the Company arrive, tech and perform all in one day.

2. TECHNICAL INFORMATION

The Presenter agrees to provide the Company Technical Director with the following information at least **three (3) months before** the presentation:

- CAD drawings (vwx. or dwg.) of theater ground plan and section in measureable scale showing linesets, orchestra pit, house seating and lighting positions
- A list of operational lighting, sound and softgoods inventories
- Specifications of house lighting and sound system
- A general description of the theater: type, seating arrangement and capacity, union circumstances, stage floor condition, etc.

Approximately **three (3) to four (4) weeks before the performance** the Company will provide the Presenter with detailed plans and a light plot tailored to the specific venue and equipment of the Presenter. The Company reserves the right to approve all technical decisions, in consultation with the Presenter, with regards to the personal safety of the Company and the artistic integrity of the performance.

3. CREW REQUIREMENTS

A. Technical Director

The Presenter agrees to provide an English speaking Technical Director with decision-making responsibility to be present, responsible to, and accessible for consultations with the Company at all crew calls.

B. List of Crew

a. Load-in, Focus and Load-out:

- (5) Electricians (including one (1) light board operator)
- (2) Carpenters (Set and/or Props)
- (2) Fly men / weight loaders
- (1) Sound (if set-up is required for speakers, add as needed)
- (1) Wardrobe (Please discuss with Company TD about call times)

b. Running Crew (technical Rehearsal through final curtain down):

- (1) Light board operator
- (2) Deck electricians
- (1) Sound engineer
- (1) Carpenter / Fly man
- (1) Wardrobe (daily wash, dry, steam and repairs as requested by the Company)

If house rules allow, electricians, carpenters and fly men tasks may be shared.

Should the Presenter fail to provide required personnel, it is agreed that the Company shall have the right to hire any needed personnel as described above, to satisfy stage crew requirements. It is further understood that the Company shall have the right to hire this personnel at a rate of \$40.00 per person, per hour, which will be paid by the Presenter.

C. Additional Time/Crew

If television, radio, film, livestream or other activities should cause a delay in the technical preparation of the show, Presenter shall be responsible for the time, personnel and cost required to complete the technical preparation of the show.

Please find additional crew requirements for specific ballets in later section.

4. EVIDENCE TECH SCHEDULE

Presenter agrees to give the Company uninterrupted access to the performance space according to the following schedule:

- Twelve (12) hours for load-in focus, cueing and a spacing rehearsal one day prior to first curtain
- Twelve (12) hours prior to first curtain time on day of performance with exclusive use of the space

See below for specific rehearsal schedules.

A. Basic production schedule (Recorded playbacks):

Two (2) days prior to first performance: pre-hang electrics and soft goods, drop colors (EVIDENCE production staff will be present for this call upon a special request)

One (1) day prior to first performance:

TIME	ACTIVITY	LX	SET/PROPS	FLY RAIL	SOUND	WARDROBE
9am - 1pm	Load-in	5	2	2	0 to 1	0
1pm - 2pm	Crew lunch	--	--	--	--	--
2pm - 6pm	Focus	5	2	2	0	1*
6pm - 7pm	Crew dinner	--	--	--	--	--
7pm - 10pm	Focus / Program	2 to 5	0	0 to 2	0	0

* Wardrobe crew needed if the company is on tour coming directly from another venue. Please check with the production manager.

TIME	ACTIVITY	LX	SET/PROPS	FLY RAIL	SOUND	WARDROBE
8am - 12pm	Cueing / Sound check	3	0	1	1	1
12pm - 1pm	Crew lunch / Company class	--	--	--	--	1
1pm - 5pm	Technical rehearsal	3	0	1	1	1
5pm - 6pm	Tech notes / Clean up	3	0	1	1	1
6pm - 7pm	Crew dinner / Company class	--	--	--	--	--
7pm	Preshow check, sweep & mop	3	0	1	1	1
7:30pm	House Open / Main curtain in	3	0	1	1	1
8pm	Curtain	3	0	1	1	1

If house rules allow, Electrics, Set/Props and Fly Rail tasks may be shared.

B. Production schedule with Live Musicians:

This schedule is used only when the Company performs with live musicians.

Two (2) days prior to first performance: pre-hang electrics and soft goods, drop colors
(EVIDENCE production staff will be present for this call upon a special request)

One (1) day prior to first performance:

TIME	ACTIVITY	LX	SET/PROPS	FLY RAIL	SOUND	WARDROBE
9am - 1pm	Load-in	5	2	2	4	0
1pm - 2pm	Crew lunch	--	--	--	--	--
2pm - 6pm	Focus, Sound setup	5	2	2	4	0
6pm - 7pm	Crew dinner	--	--	--	--	--
7pm - 10pm	Focus / Program / Sound check with musicians	2 to 5	0	0 to 2	4	0

Day of performance:

TIME	ACTIVITY	LX	SET/PROPS	FLY RAIL	SOUND	WARDROBE
8am - 10am	Cueing / Music rehearsal	3	0	1	4	0
10am - 12pm	Dancers rehearse with musicians on stage	3	0	1	4	0
12pm - 1pm	Crew lunch / Company class	--	--	--	--	1
1pm - 5pm	Technical rehearsal	3	0	1	4	1
5pm - 6pm	Tech notes / Clean up	3	0	1	4	1
6pm - 7pm	Crew dinner / Company class	--	--	--	--	--
7pm	Preshow check, sweep & mop	3	0	1	4	1
7:30pm	House Open / Main curtain in	3	0	1	4	1
8pm	Curtain	3	0	1	4	1

If house rules allow, Electrics, Set/Props and Fly Rail tasks may be shared.

5. SOUND REQUIREMENTS

The Company does not travel with sound equipment. All sound cues are prerecorded and programed on a QLab 4 file. The Presenter agrees to supply following:

A. PA System

The Presenter must provide a professional-quality, full-range stereo sound system with left, right, center, and subwoofer channels capable of producing concert-level sound with even, tonally balanced coverage of the entire audience. The Presenter is responsible for the installation and calibration of the sound system prior to the Company's arrival, and must have the capacity to provide compression, EQ, reverb, and basic processing as needed.

B. Stage Monitors

The Presenter must provide a professional-quality, full-range stereo monitor (foldback, side fill) system capable of producing sound, tonally balanced coverage of the entire dancing area. This typically requires a minimum of 4 speakers, 2 on each side of the stage. The monitors must be positioned so as not to interfere with performers exits and entrances or the flying in and out of soft goods. The sound level and EQ for the monitors must be able to be controlled independently from that of the PA.

C. Sound Engineer

The Presenter must provide a professional, thoroughly experienced sound engineer to operate the sound console and mix the show.

D. Playback Equipment for Performance

The Presenter must provide a digital playback system (QLab 4) operated by the house sound engineer. The Company will provide audio files to the house sound engineer upon arrival. If the Presenter cannot provide a digital playback system, the Company can provide a computer that will be operated by company personnel only - please notify the Company Technical Director to make arrangements.

E. Playback Equipment for Company Class/Rehearsal

The Presenter agrees to provide an iPod/iPhone playback system for both onstage and rehearsal space use for the Company dancers to use and take control of volumes.

F. Intercom

The Presenter agrees to provide a professional full-duplex single-channel intercom system to the following locations:

- Company Technical Director (wireless preferred) at the calling station
- Company Technical Director at the tech table - During the tech rehearsal only
- Light Board Operator
- Sound Board Operator
- SR Deck Local (wireless preferred)
- SL Deck Local (wireless preferred)
- Fly Rail (wireless preferred)

G. Show Feed & Paging

Please provide a live show audio feed and paging mic output to all dressing rooms and backstage areas.

6. LIGHTING REQUIREMENTS

The Presenter must provide all equipment and power needed to execute the Company light plot and hook-up, which consists of approximately 230 units, 120 controls and dimmers. The Company will provide all templates.

The Presenter agrees to provide lighting equipment, color media, and accessories to meet the Company requirements as specified on the light plot and hook-up sheets. The Company light plot and accompanying paperwork are usually sent out approximately **three (3) to four (4) weeks before performance**, but can be sent out earlier upon request. The Presenter's technician will contact the Company Technical Director once the Presenter receives the Company's light plot.

Reduction in the number of lighting instruments may be made by special agreement with the Company Technical Director.

A. Lighting Console

The Presenter agrees to provide an **ETC Eos Family Control Console** (Eos, Ion, Gio, or Element) for ease of loading show files. Please discuss with the Company if the venue does not own ETC EOS Family Console. Below is a minimum requirements:

B. Basic Rep Plot - Please see Appendix B:

Minimum Company requirements are listed below:

- (5) On-stage electric pipes
- (1~3) Front-Of-House position
- (2) Box boom positions
- (8) 10' feet (3.04 meter) booms with 50 lb. boom bases
- (49) ETC Source4 36° (575w or 750w)
- (24) ETC Source4 26° (575w or 750w)
- (33) ETC Source4 19° (575w or 750w)
- (48) ETC Source4 Par WFL (575w or 750w)
- (16) LED cyc units (Top and Bottom)
- (32) 18" single tee sidearms for booms
- (8) Template holders
- (200+) 2.4kW dimmers

C. Running Lights

General running lights must be provided for backstage. Running lights are typically blue bulbs or have blue color media. The ability to dim the run lights is highly desirable. Additional running lights may be required at load-in at the discretion of the Company.

D. Miscellaneous

- Provide all color media as specified on light plot and drop all color prior to focus.
- Half hats, top hats, barn doors, black wrap, black tack, and clothes pins/ binder clips should be in supply and ready for use as needed.
- Any cable run on the ground should be dressed and covered with cable ramps, carpet, or marley to insure the safety of performers.

7. ADDED LIGHTING, SCENERY AND SPECIAL EQUIPMENTS PENDING PROGRAM:

Amen (An Excerpt from Come Ye)

- (31) ETC Source4 36° (575w)
- (3) 8" Fresnel (2kW)
- (2) Hazer

* **Video Equipment (Please see Page: 13)**

Bellows (An Excerpt from One Shot)

- (14) ETC Source4 36° (575w)
- (1) ETC Source4 26° (575w) with a Drop-in iris

* **Video Equipment (Please see Page: 13)**

Better Days

- (4) ETC Source4 10° (575w)
- (8) ETC Source4 36° (575w) with B-size template holders
- (1) 6" Fresnel (1kW)
- (1) Motorized mirror ball with hanging hardware

Come Ye

- (31) ETC Source4 36° (575w)
- (3) 8" Fresnel (2kW)
- (2) Hazer

* **Video Equipment (Please see Page: 13)**

Dancing Spirit

- (9) ETC Source4 36° (575w)
- (1) ETC Source4 Par WFL (575w) with a floor plate
- (2) ETC Source4 Par MFL (575w)
- (6) Par64 MFL (1kW) with a barndoor
- (2) Hazer

Ebony Magazine: To a Village

- (16) ETC Source4 36° (575w)
- (2) Hazer (Look Solutions UNIQUE 2.1 Hazers, or appropriate equivalent)

Exotica

- (5) ETC Source4 50° (575w)
- (2) ETC Source4 36° (575w)
- (2) Par64 MFL (1kW) with a barndoor
- (3) 6" Fresnel (1kW)
- (1) Mini-10 (500w) with a floor plate

Four Corners

- (1) ETC Source4 50° (**750w**) with A-size template holder
- (4) ETC Source4 36° (575w) with B-size template holder

Gatekeepers

- (9) ETC Source4 36° (575w) with A-size template holder
- (3) ETC Source4 19° (575w)

Grace - Please see **Appendix C-1** for additional notes on Scenery

- (1) Upstage Black Traveler or Split Black with a center split of 8' opening
- (2) ETC Source4 26° (575w)
- (5) ETC Source4 36° (575w)
- (2) Floor plates for ETC Source4 26°

High Life - Please see **Appendix D-1** for notes on Props

- (6) ETC Source4 36° (575w)
- (9) ETC Source4 26° (575w)
- (3) ETC Source4 19° (575w)
- (4) B-size Template holder for ETC Source4
- (10) Par64 MFL (1kW) with a barndoor
- (2) 6-feet (1.83 meters) rover boom
- (5~6) 1930's period look luggage
- (1) Stage dolly (30" x 18")
- (1) African bag

IFE/ My heart

- (6) ETC Source4 50° (575w)
- (8) ETC Source4 36° (575w)
- (8) ETC Source4 26° (575w)
- (8) Par64 NSP or Fresnel (1kW)

Incidents - Please see **Appendix C-2** for notes on Scenery

- (1) Upstage Black Traveler with a center split of 5' opening
- (1) ETC Source4 50° (575w)
- (5) ETC Source4 36° (575w)
- (1) ETC Source4 19° (575w)
- (2) Drop-in Iris for ETC Source4
- (1) Small Stool (Approx. 18" High)

March

- (3) ETC Source4 36° (575w)

Mercy - Please see **Appendix C-3** for additional notes on Scenery**

- (5) ETC Source4 LED Series2 (Lustr2) 36° with a 24" sidearm
- (8) ETC Source4 36° with A-size template holders
- (4) ETC Source4 Par WFL (575w)
- (4) 8" Fresnel (2kW)
- (2) 8-feet (2.44 meters) rover boom
- (5) Lightbulb (500w) - Eiko ECT 120w 500w Photo Flood Lamp

** Scenery (Also on **Appendix C-3**):

"**Mercy**" requires a fly system to hang/operate five (5) identical 30'-0" high fabric columns. Each column contains a 500w lightbulb hung inside at 6'-0" to 7'-0" from the stage deck. The columns, hardware, lightbulbs and required cables are provided by the Company. If the Presenter's stage house is NOT equipped with a fly system, special arrangements must be made with the Company Technical Director that may include the rental of added pipes and rigging hardware.

New Conversations: Iron Meets Water - Please see **Appendix E-3** for Sound

- (11) ETC Source4 36° (575w)
- (3) A-size template holders
- (1) Par64 MFL (1kw) with a 6-feet (1.83 meters) rover boom
- (2) Par64 WFL (1kw) with a floor plate
- (2) Hazer

Ballet is performed either with live music or with recorded playbacks. For live music performed by Arturo O'Farrill and Resist, the band is consisted of one (1) Grand Piano, one (1) Flute and Piccolo, one (1) Tuba, and two (2) Percussions. The Presenter should supply:

- (1) Grand Piano
- (1) Piano bench
- (1) Music rack for Grand Piano and a Desk lamp (or equivalent)
- (7) Microphone (Two (2) for each percussionist)
- (4) Monitors – One (1) for Piano, Flute, Tuba, and one (1) for Percussions
- (4) Chairs without armrests
- (4) Music stand
- (4) Music stand lights
- (1) Drum screen (Drum shield) between Tuba and Percussions
- (5) Water bottle for each musician

On Earth Together

- (39) ETC Source4 36° (575w)
- (3) 8" Fresnel (2kw)
- (2) Hazer

One Shot

- (16) ETC Source4 36° (575w)
 - (1) ETC Source4 26° with a Drop-in iris
 - (16) B-size template holder for ETC Source4
- * Video Equipment (Please see Page: 13)**

Order My Steps

- (17) ETC Source4 36° (575w)
- (4) ETC Source4 26° (575w)
- (8) 6" Fresnels or Par64 WFL (1kW)

Open Door

- (20) ETC Source4 36° (575w)
- (8) B-size template holder for ETC Source4
- (4) Par64 NSP
- (8) 6" Fresnels or Par64 WFL (1kW)

Percussion Bitter Sweet: Tender Warriors

- (1) A lineset pipe, positioned US of Cyclorama for hanging a string of light bulbs
- (15) 40-watt, warm white (2700K), A-type light bulbs
- (5) Dimmable circuits with Female edison connectors
- (6) 8" Fresnel (2kW) or appropriate equivalent
- (4) 6-feet tall Rover
- (4) ETC Source4 36° (575w or 750w)
- (2) Hazer

Serving Nia (See **Appendix C-7**)

- (1) A lineset pipe, positioned US of Cyclorama for hanging a string of light bulbs
- (7) 100-watt warm white (2700k) A-type light bulb
Attached to a webbing with Edison plugs - 7 dimmable circuits needed
- (4) 8" Fresnel (2kW) or appropriate equivalent with Barndoor
- (3) ETC Source4 26° or 36°, hung on Balcony Rail for cyc wasy with gobo
- (3) B-size template holder for ETC Source4
- (4) Par64 NSP (1kW) with on Boom
- (2) 6' Booms for Par64 NSP
- (2) ETC Source4 26° with a floor plate

She Is Here...

- (6) ETC Source4 36° (575w)
- (4) A-size template holder for ETC Source4
- (3) Par64 MFL (1kW) with a barndoor

The Subtle One

- (13) ETC Source4 36° (575w)

The Equality of Night and Day - with SCENERY (See **Appendix C-5a&b**)

- (5) Chroma-Q Color Force 72, Color Force II 72 or appropriate equivalent
(Used as Cyc Ground Row)
- (3) Martin JEM AF-2 DMX fan (24") or Box Fan
- (3) Taildown pipes or equivalent for DMX fan
- (6) 8" Fresnel (2kW) or appropriate equivalent with Barndoor
- (3) ETC Source4 Lustr 2 90° (Used as foot lights)
- (3) Floor Plates for ETC Source4 Lustr
- (12) ETC Source4 36°
- (4) B-size Template holder for ETC Source4
- (2) Hazer
- (10) 18" to 24" Side Arms ... for hanging the scenery

* **Video Equipment - Front Projection Only** (Please see Page: 13)

The video images will be projected on the scenery (9 "Flags").

*** Wardrobe crew typically needs at least 4 hours to steam the costumes, which are made of Linen. Each dancer has a robe and a pair of wide pants.

The Equality of Night and Day - with NO Scenery - Venues with NO Fly system

- (5) Chroma-Q Color Force 72, Color Force II 72 or appropriate equivalent
(Used as Cyc Ground Row)
- (3) Martin JEM AF-2 DMX fan (24") or Box Fan
- (3) Taildown pipes or equivalent for DMX fan
- (6) 8" Fresnel (2kW) or appropriate equivalent with Barndoor
- (3) ETC Source4 Lustr 2 90° (Used as foot lights)
- (3) Floor Plates for ETC Source4 Lustr
- (12) ETC Source4 36° (575w)
- (4) B-size Template holder for ETC Source4
- (2) Hazer

*** Video Equipment - Front /Rear Projection (Please see Page: 13)**

*** Wardrobe crew typically needs at least 4 hours to steam the costumes, which are made of Linen. Each dancer has a robe and a pair of wide pants.

Torch

- (1) Blackout Curtain or Traveler (Reveal Scrim and Cyc during the piece)
- (17) ETC Source4 36° (575w)
- (1) ETC Source4 19° (575w)
- (11) A-size template holder for ETC Source4

Truth Don Die

- (2) ETC Source4 50° (575w)
- (2) ETC Source4 36° (575w)
- (1) ETC Source4 26° (575w)
- (2) B-size template holder for ETC Source4
- (2) 6-feet (1.83 meters) rover boom

Two-Year Old Gentlemen

- (4) ETC Source4 50° (575w)
- (5) ETC Source4 36° (575w)
- (2) ETC Source4 26° (575w)
- (2) ETC Source4 19° (575w)

Upside Down

- (17) ETC Source4 36° (575w)
- (2) ETC Source4 26° (575w)
- (2) Hazer

Walking Out the Dark - Please see **Appendix C-4** for notes on Scenery**

- (15) ETC Source4 36° (575w)
- (13) ETC Source4 19° (575w)
- (17) B-size template holders for ETC Source4
- (4) Drop-in iris for ETC Source4
- (1) Lavalier microphone or a microphone with a stand for poem readings

** Scenery (Also on **Appendix C-4**):

“**Walking Out the Dark**” requires a fly system to operate two (2) 40'-0" wide snow bags (provided by the Company) for a falling dirt effect. If the Presenter’s stage is NOT equipped with a fly system, a special arrangement must be made with the Company Technical Director. The Presenter should provide any additional rental/purchases.

Please note that under special circumstances the Company will perform “**Walking Out the Dark**” in absence of the falling dirt effect. Please advise if the use of the falling dirt effect will be problematic for your venue. Below is a list of necessary items:

- (1) **100 lbs of Rubber Crumbs** (Need an approval from the Company TD)
- (1-2) Rubbermaid tub, bucket or equivalent (to collect the rubber crumbs)
- (6-8) Bath towels (to clean the stage after performance)
- (2) Push brooms (wrapped with towels for cleaning)
- (2) Dust mops
- (2) Small brooms and dust pans (for collecting the crumbs)

Additional stagehands required to setup/operate/cleanup the dirt effect

- (2) Additional crew operating the rail during the ballet (in addition to flymen)

Water

- (6) ETC Source4 50° (575w)
- (2) ETC Source4 36° (575w)
- (4) 6-feet (1.83 meters) rover boom
- (2) GAM Twinpins
- (16) Color extenders
- (1) Lavalier microphone for Cheryl Boyce-Taylor speaking during the ballet

Where The Light Shines Through

- (7) 8" Fresnel (2kW) or appropriate equivalent
- (8) Par64 NSP (1kW) on Booms
- (2) Hazer - Piece requires heavy atmosphere
- (6) ETC Source4 36° on FOH Balcony Rail position
- (6) B-size Template holder for ETC Source4

Why You Follow

- (4) ETC Source4 50° (575w) with A-size template holder

8. * VIDEO REQUIREMENTS for Selected Ballets ("*Amen*", "*Bellows*", "*Come Ye*", "*One Shot*", "*The Equality of Night and Day*"**)

The digital film element is designed to cover a substantial portion of the cyclorama. The Presenter agrees to provide the following devices:

- (1) Computer with QLab4/5 with Professional Video license installed
- (1) A flipper to douse the projection (Or a Projector with an internal shutter)
- (1) Monitor (optional - helps crew to set-up/operate)
- (1) Video projector with at least 10,000 lumen capacity preferred or enough power to throw a bright, clear image from projector location to Cyclorama / Screen

**** *The Equality of Night and Day* requires a front projection only.**

9. TECH TABLE AND STAGE MANAGER

A. Tech Table

The Presenter must provide a tech table in the audience for the Company Technical Director during cueing sessions and rehearsals. The following must be provided at the tech table:

- Remote monitor(s) for the lighting console
- (2) intercom stations with headsets
- (1) God mic with switch
- (2) Little lights or desk lamps

B. Stage Manager Position

The Company's Stage Manager will call the show from onstage or from a FOH control booth. The SM may be at the tech table or at the calling position during cueing sessions and rehearsals. The following must be provided at the stage manager position:

- (1) Intercom, preferably wireless during technical rehearsal
- (1) God mic with switch
- (1) Little light or desk lamp
- (1) Video monitor with color full stage shot from the FOH Center
- (1) Remote video monitor for the lighting cue playback status
- Paging mic for dressing rooms & backstage areas

10. WARDROBE REQUIREMENTS

A. Wardrobe Crew

The Presenter agrees to provide an experienced wardrobe person. **The Company does not travel with any wardrobe personnel.**

Costumes should be pressed or steamed two hours prior to all dress rehearsals and performances as requested by the Company. Minor costume repairs may be requested by the Company. Costumes must be cleaned after all performances. The Company will provide costume maintenance instructions.

B. Laundry facilities and supplies

The Presenter agrees to provide laundry facilities and supplies. If laundry facilities are not available at the theater, the Presenter must make arrangements for laundry to be done off-site and returned to the theater on the schedule provided by the Company staff. The Presenter shall be responsible for laundry expenses.

The Presenter agrees to provide the following supplies:

- (2) Professional grade steamers
- (4) Wardrobe racks
- (40) Hangers
- (12) Large towels, cleaned daily

11. DRESSING ROOMS

- a.) Separate dressing rooms shall be provided for male and female members. Preferred dressing room breakdown is:
 - (1) Room for Artistic Director and Associate Artistic Director
 - (2-8) Soloist or chorus rooms to comfortably accommodate seven (7) to nine (9) dancers
- b.) Dressing rooms shall be of a permanent type and be of sufficient and suitable dressing space. All dressing rooms shall be properly heated and cooled and have adequate lights, mirrors, shelves, table space, wardrobe racks, hooks, iron and ironing board.
- c.) Use of fluorescent lighting for make-up is prohibited unless the fluorescent lighting is specifically warranted by the manufacturer to be for make-up purposes.
- d.) Dressing room entrances and windows shall be properly masked from view of the Costumes, properties, scenery and sound and video files for the performance audience to ensure privacy.
- e.) All dressing rooms shall be equipped with air-conditioning systems, air cooling systems or some type of mechanical device to ensure proper ventilation and circulation of fresh cool air.
- f.) Presenter agrees to provide heat in the dressing rooms, if the outside temperature falls below sixty (60) degrees.
- g.) Separate toilet facilities will be provided for male and female members and shall be clean and sanitary. Said facilities will be separate from those provided for audience members.
- h.) Showers with hot and cold running water, sinks, soap, toilet tissue, paper towels, shall be provided in the dressing room area.

12. SAFETY AND SANITARY REGULATIONS

Presenter agrees to provide the following:

- a.) Twenty (20) pounds of crushed/cubed ice per day, for injuries, stored within immediate access to the stage and/or rehearsal facilities wherever dancers are present.
- b.) A fully stocked and updated First Aid Kit must be present and accessible.
- c.) One (1) room suitable for a Company production office with desks and chairs to accommodate two (2) people, preferably with free local telephone and internet access. This room must be secure and lockable with access only by the Company production staff.
- d.) Alleys and roads leading to stage doors of theater shall be accessible and properly lit. Runways between dressing rooms and theater shall be covered, paved or boarded.
- e.) Parking permits and related costs for official Company vehicles will be coordinated and assumed by the Presenter. The Company will inform the Presenter of such needs prior to arrival.
- f.) If the native language is other than English, the Presenter is required to provide a translator fluent in English and the native language who has a working familiarity with theater technical terminology. The translator will be available to the company at all times throughout the engagement. An additional translator may be required if the Company artistic staff are participating in official activities in a different location than the production staff.
- g.) All high touch surfaces areas will be cleaned every 2 hours and each evening a deep thorough clean of the space should be completed.
- h.) EVIDENCE is willing to coordinate with the presenter regarding updated procedures regarding COVID-19 and/or other health related.

13. HOSPITALITY

Presenter agrees to provide the following:

- a.) Twenty-Four (24) liters of purified, non-carbonated, room temperature drinking water with no additives, individually bottled for each rehearsal, performance or official activity.
- b.) From load-in to final curtain an assortment of items including coffee, tea, soda, ginger ale, fruit juices, active drinks such as gatorade or vitamin water, fruits, vegetables, nuts, chips, guacamole, greek yogurt, bagels with cream cheese, bread, cheese, deli meats and chocolate will be available.
- c.) Following the performance a hot meal will be provided for the company with the option of to-go containers for those who wish to return to the hotel. Meal should include hot dinner dish of chicken and/or fish, fresh garden salad, pasta dish and drinks (ginger ale is preferred).

For additional information on hospitality please contact:

Company Manager at company_manager@evidencedance.com

14. FRONT OF HOUSE & BOX OFFICE REQUIREMENTS

The Presenter agrees to provide, at its own expense, the following:

- a.) Printing and distribution of all tickets and programs for the performance or residency.
- b.) All advertising and other printed materials related to performance.
- c.) All front of house staff, including box office personnel, ticket takers, ushers, security, janitor and other personnel as necessary for performance or residency.

15. ADDITIONAL QUESTIONS

If the Presenter has any questions about:

- Hotel accommodations
- Transportations
- Hospitality
- Residency activities
- Comp tickets
- Dressing room assignments
- Rehearsal space
- Itinerary
- Scheduling of interviews

Please contact:

- **Jane Penn**, Interim Managing Director, at jane@evidencedance.com or (919) 813-6092

16. AGREEMENT

This **Technical Rider and the presenter technical specifications and contract technical items** are the entire rider between the PRESENTER and the COMPANY relating to the performance above unless otherwise agreed upon, attached and signed by both parties. Both the PRESENTER and the COMPANY must approve in writing any changes or amendments to this rider. The rider in no way binds the PRESENTER or the COMPANY beyond the period indicated above.

Presenter:

**Ronald K. Brown/EVIDENCE,
A Dance Company:**

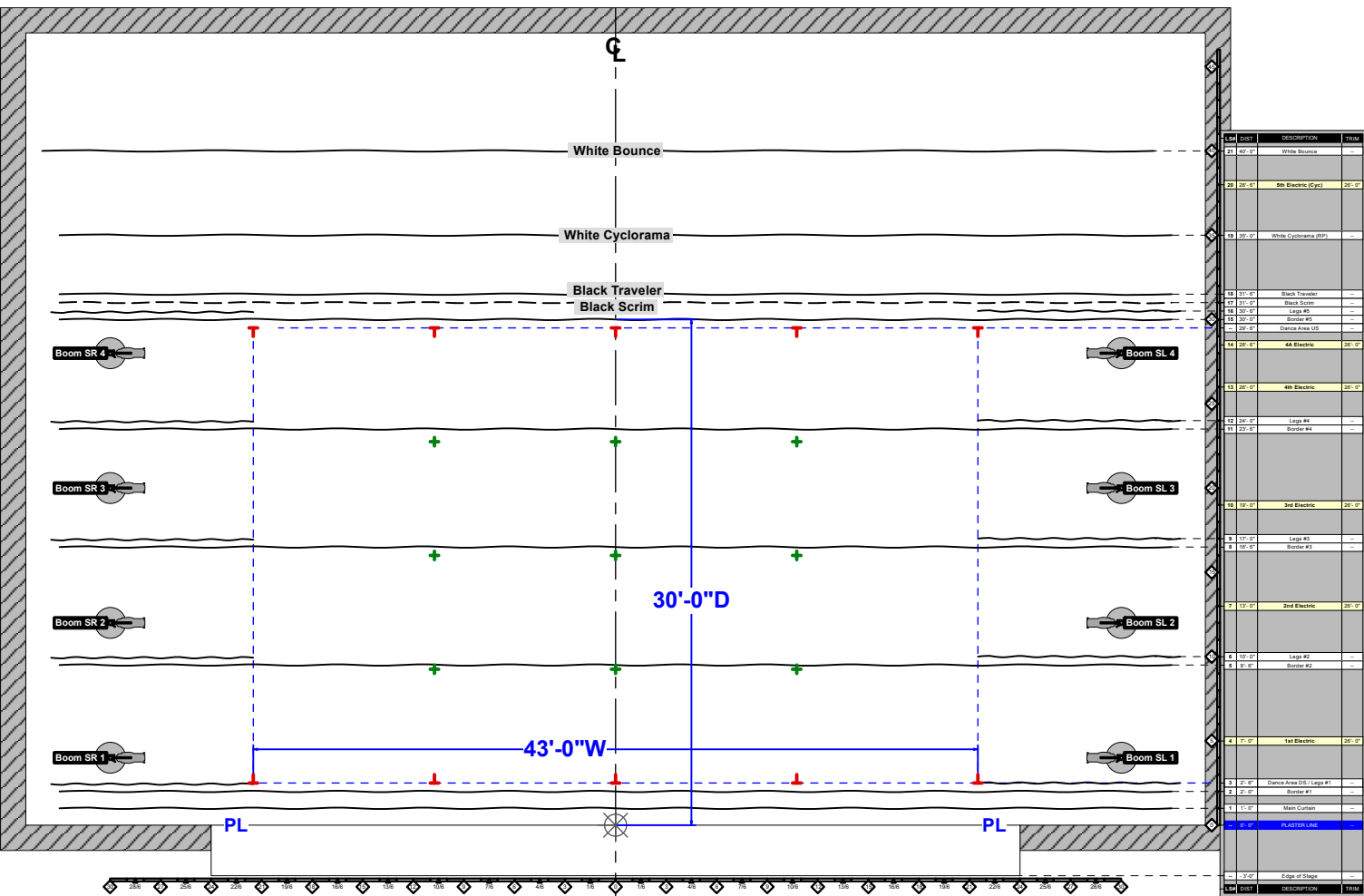
By: _____

By: _____

Date: _____

Date: _____

APPENDIX A: Ground Plan



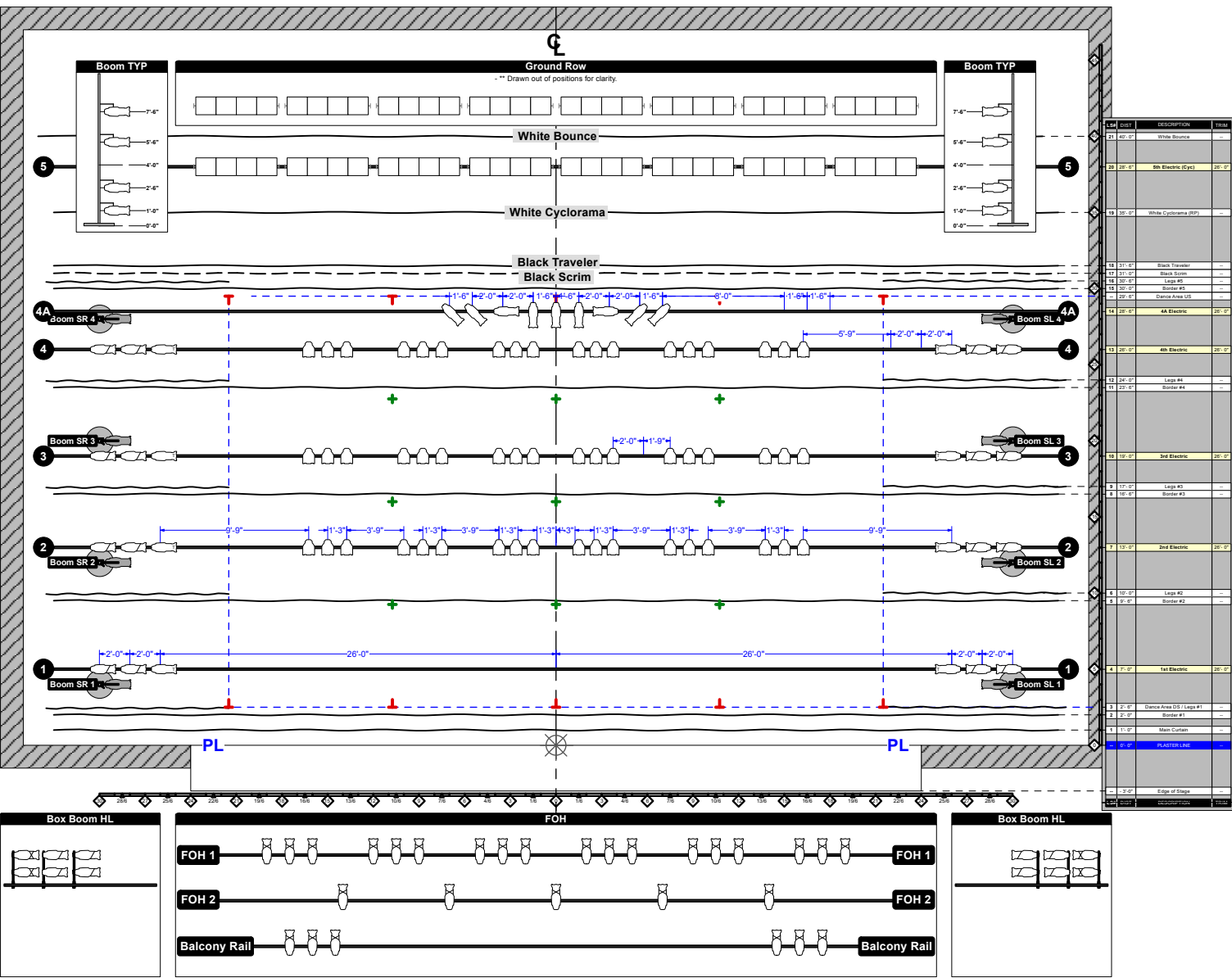
STAGE REQUIREMENTS:

- Stage size (w/ wings): 60' feet (18m) wide x 40' feet (12m) deep
- Dancing area: 43' feet (13m) wide x 30' feet (9m) deep from the plaster line to black backdrop
- Crossover: 3' feet (1m) minimum depth between the last working line set and the back wall, free of obstructions, for a crossover appropriate for dancers with bare feet
- Pipe (Batten) length: 60' feet (18m)

MASKING REQUIREMENTS:

- (1) House curtain and valance
- (5) Black borders (flat)
- (5) Pairs of black legs (flat)
- (1) Blackout drop/traveler
- (1) Black scrim
- (1) White cyc

APPENDIX B: Basic Repertory Light Plot

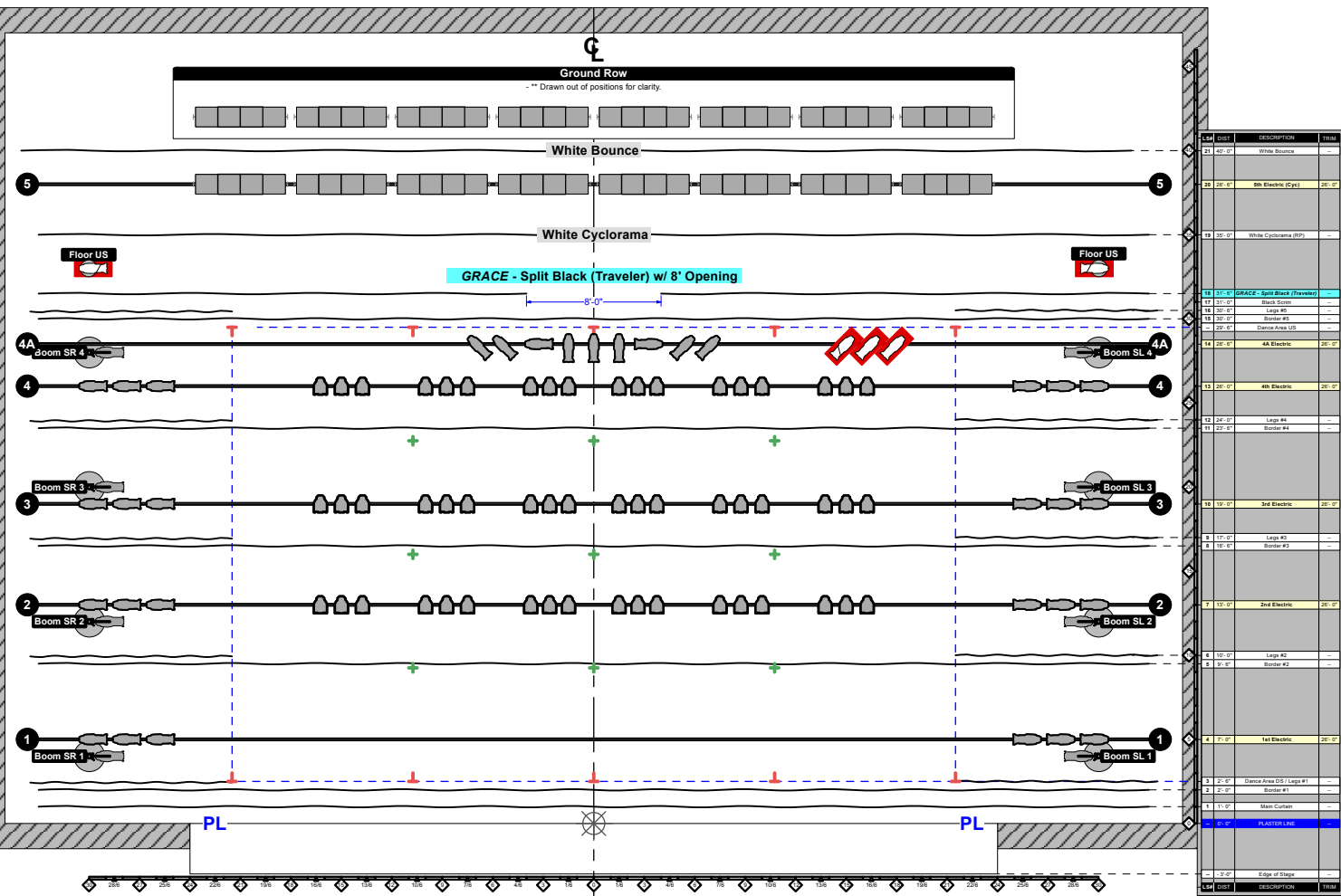


Item	QTY	DESCRIPTION	Notes
21	40	White Bounce	
33	20	6th Electric (Cyc)	20' 0"
13	20	White Cyclorama (SP)	
12	20	Black Traveler	
17	20	Black Scrim	
16	20	Legs #5	
18	20	Boiler #3	
19	20	Dance Area OS	
14	20	4A Electric	20' 0"
13	20	4th Electric	20' 0"
12	20	Legs #6	
11	20	Boiler #4	
10	10	3rd Electric	20' 0"
9	10	Legs #3	
8	10	Boiler #2	
7	10	2nd Electric	20' 0"
6	10	Legs #2	
5	10	Boiler #1	
4	10	1st Electric	20' 0"
3	2	Dance Area OS / Legs #1	
2	2	Boiler #1	
1	1	Main Console	
0	0	PLASTER LANE	
-1	0	Edge of Stage	
100	0	Occupation	

BASIC REPERTORY LIGHT PLOT:

- (5) On-stage electric pipes
- (1~3) Front-Of-House position
- (2) Box boom positions
- (8) 10' feet (3.04 meter) booms with 50 lb. boom bases
- (49) ETC Source4 36° (575w or 750w)
- (24) ETC Source4 26° (575w or 750w)
- (33) ETC Source4 19° (575w or 750w)
- (48) ETC Source4 Par MFL (575w or 750w)
- (16) 4 circuit far cyc units
- (32) 18" single tee sidearms
- (8) Template holders
- (200+) 2.4kW dimmers

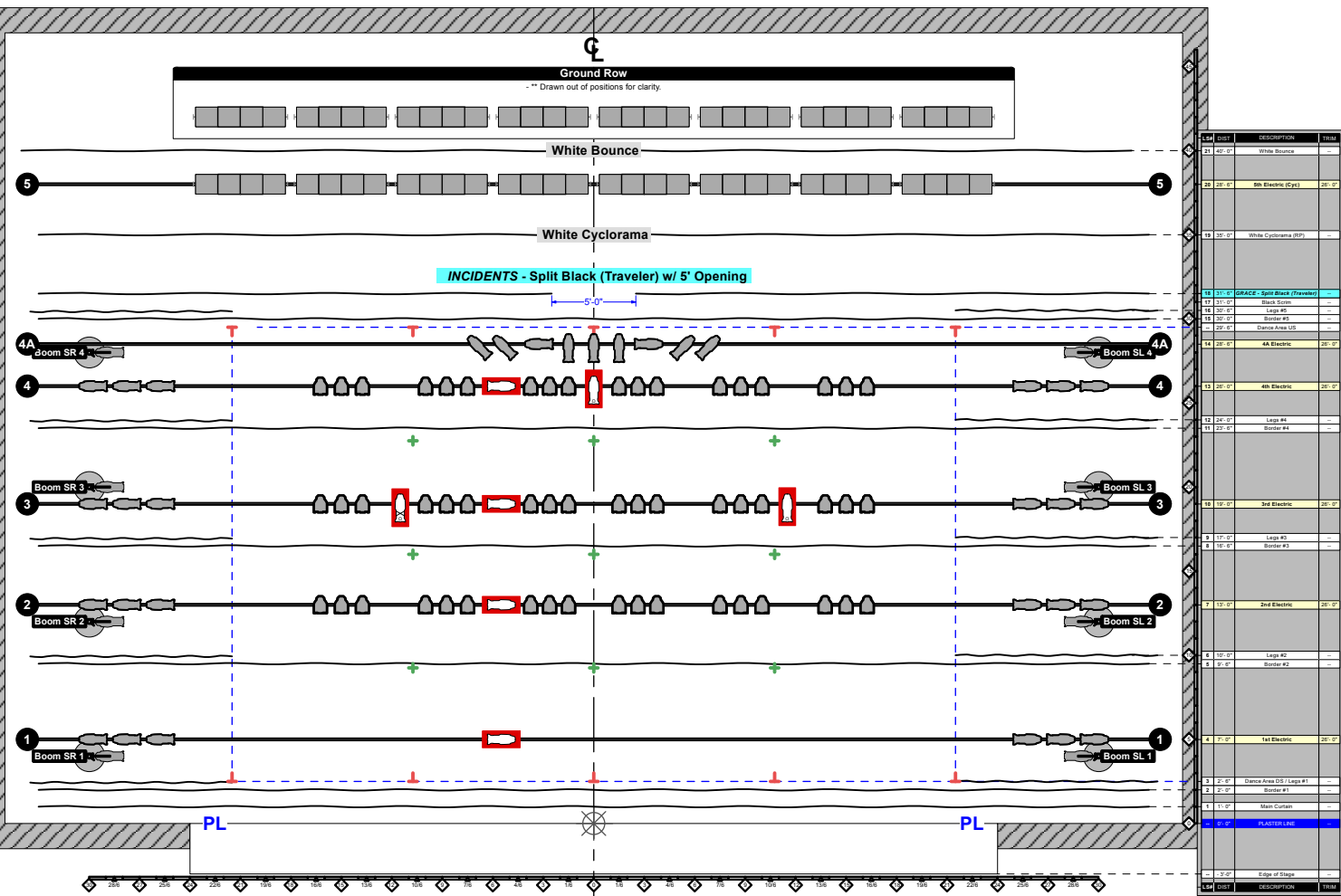
APPENDIX C-1: Grace



NOTES:

- "Grace" requires a set of Split Flat Black Curtain or Black Traveler with a center split of 8' opening, hung Downstage of Cyclorama to create an entrance/ext.
- The distance between the center split and Cyclorama should be approximately 3'0".
- The center split stays throughout the entire ballet.

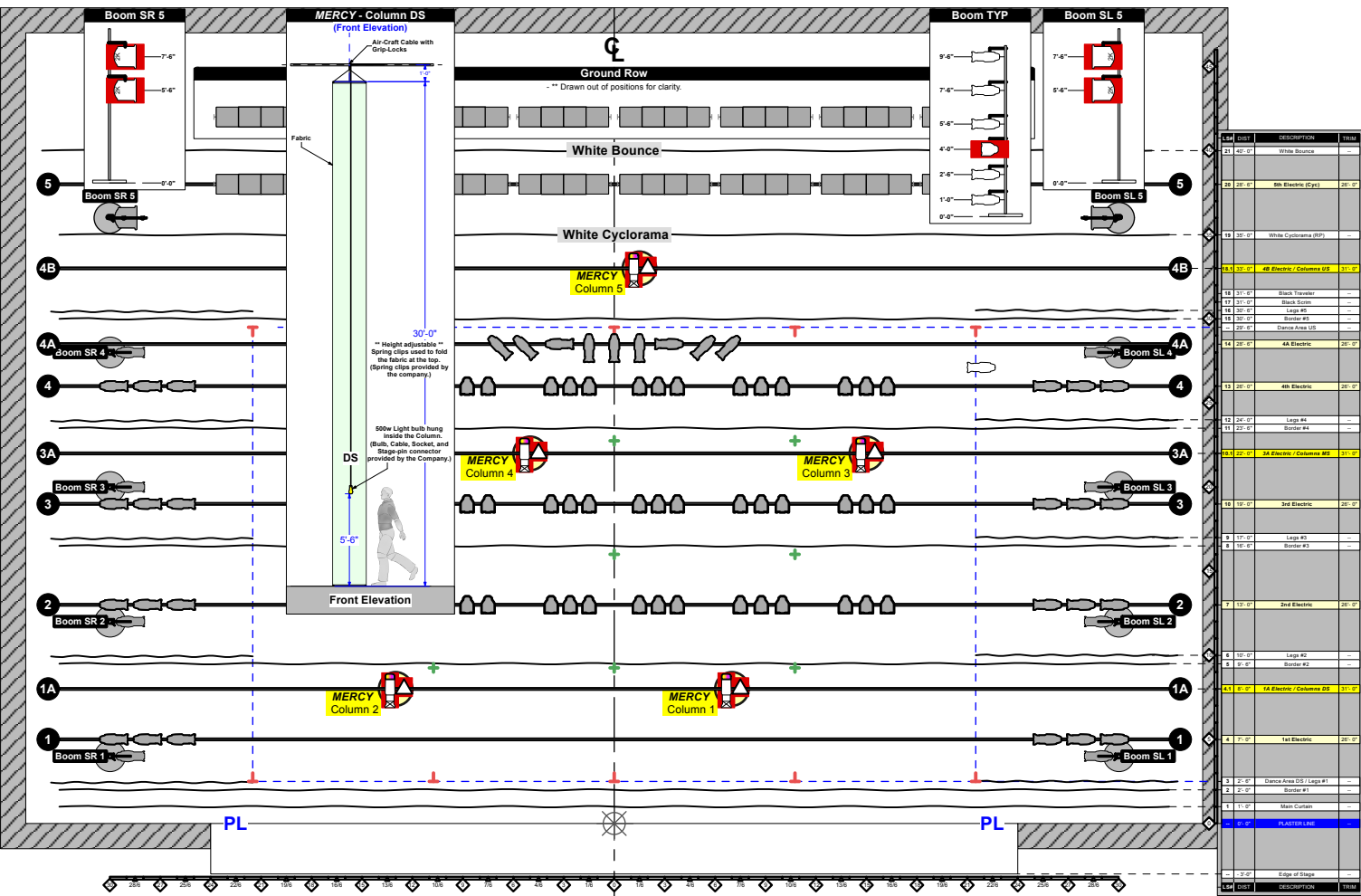
APPENDIX C-2: Incidents



NOTES:

- "Incidents" requires Upstage Black Traveler with a center split of 5' opening.
- Black center split will open/fly out during a blackout to reveal full Cyclorama.

APPENDIX C-3a: Mercy



NOTES:

"Mercy" requires a fly system to hang/operate three (3) to five (5) identical fabric columns. Each column is 2'-0" diameter and consists of a set of PVC pipe frames at the top and bottom and a 30'-0" long IFR fabric (from Rose Brand) with Velcro. Each column contains one (1) 500w light bulb hung inside at 6'-0" to 7'-0" from the stage deck. The fabric, hardware, light bulbs and the required cables will be provided by the Company. If the venue is NOT equipped with a fly system, special arrangements must be made with the Company technical director that may include a rental of added pipes and rigging hardware.

APPENDIX C-3b: *Mercy*

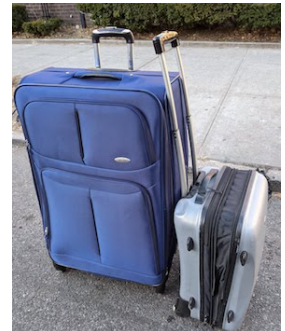


NOTES on Shipping:

The columns will be shipped to/from the venue. The containers and shipping cost may be subject to change based on the number of the columns and locations of venues.

For Three (3) columns: Cost approx. \$100 each way

- (1) Large Suitcase - 22W x 36H x 11D contains ...
 - Three (3) sets of top and bottom frames
 - Hardware, sockets and cables
 - Twenty Four (24) spring clips
 - Four (4) to Five (5) light bulbs
- (1) Small Suitcase - 15W x 21H x 10D contains ...
 - Four (4) pieces of fabric

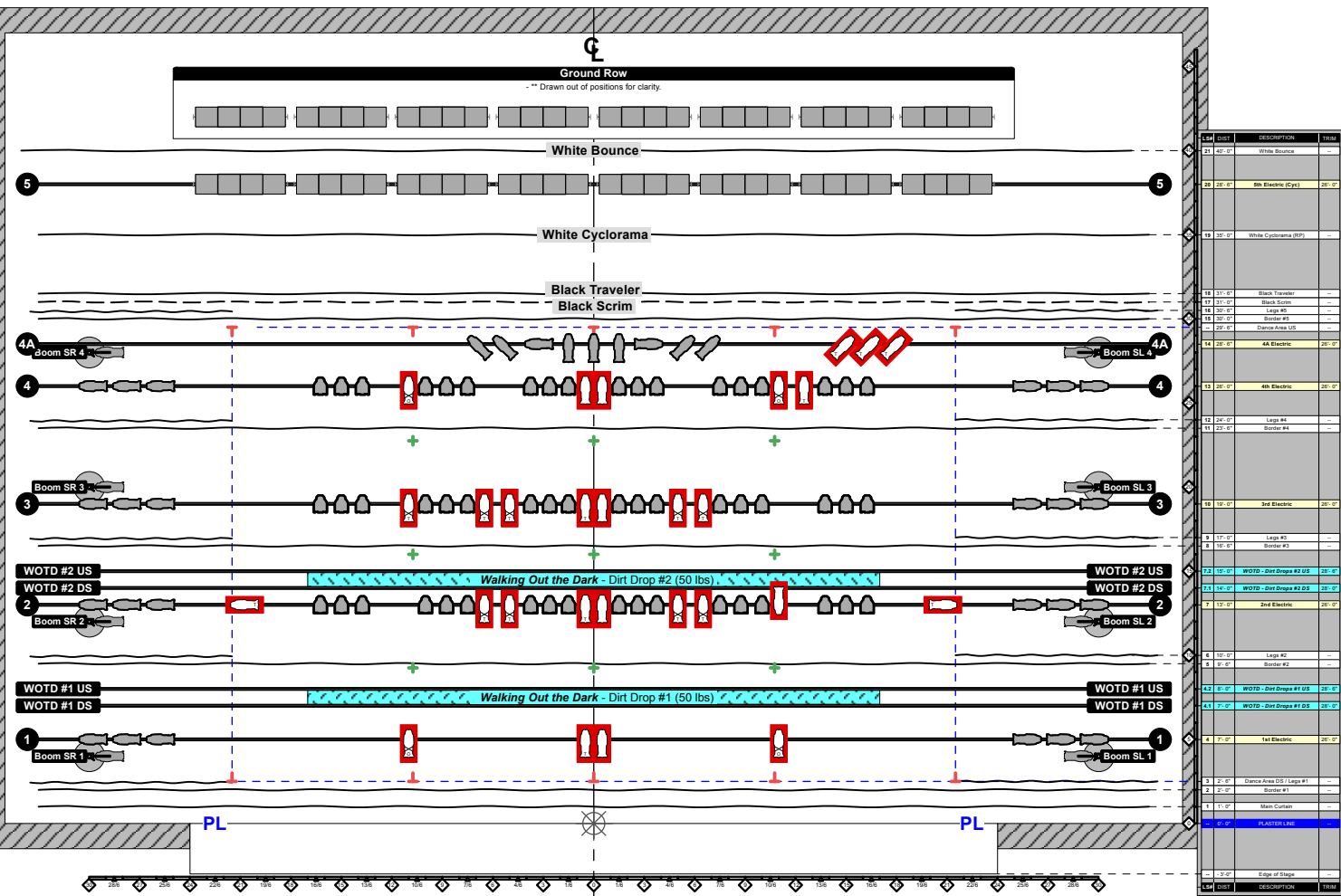


For Five (5) columns: Cost approx. \$130 each way

- (1) Large Box - 30W x 30H x 30D contains ...
 - Five (5) sets of top and bottom frames
 - Hardware, sockets and cables
 - Twenty Four (24) spring clips
 - Four (6) to Seven (7) light bulbs
- (1) Small Box - 16W x 16H x 16D contains ...
 - Twenty Four (24) spring clips
 - Five (5) pieces of fabric



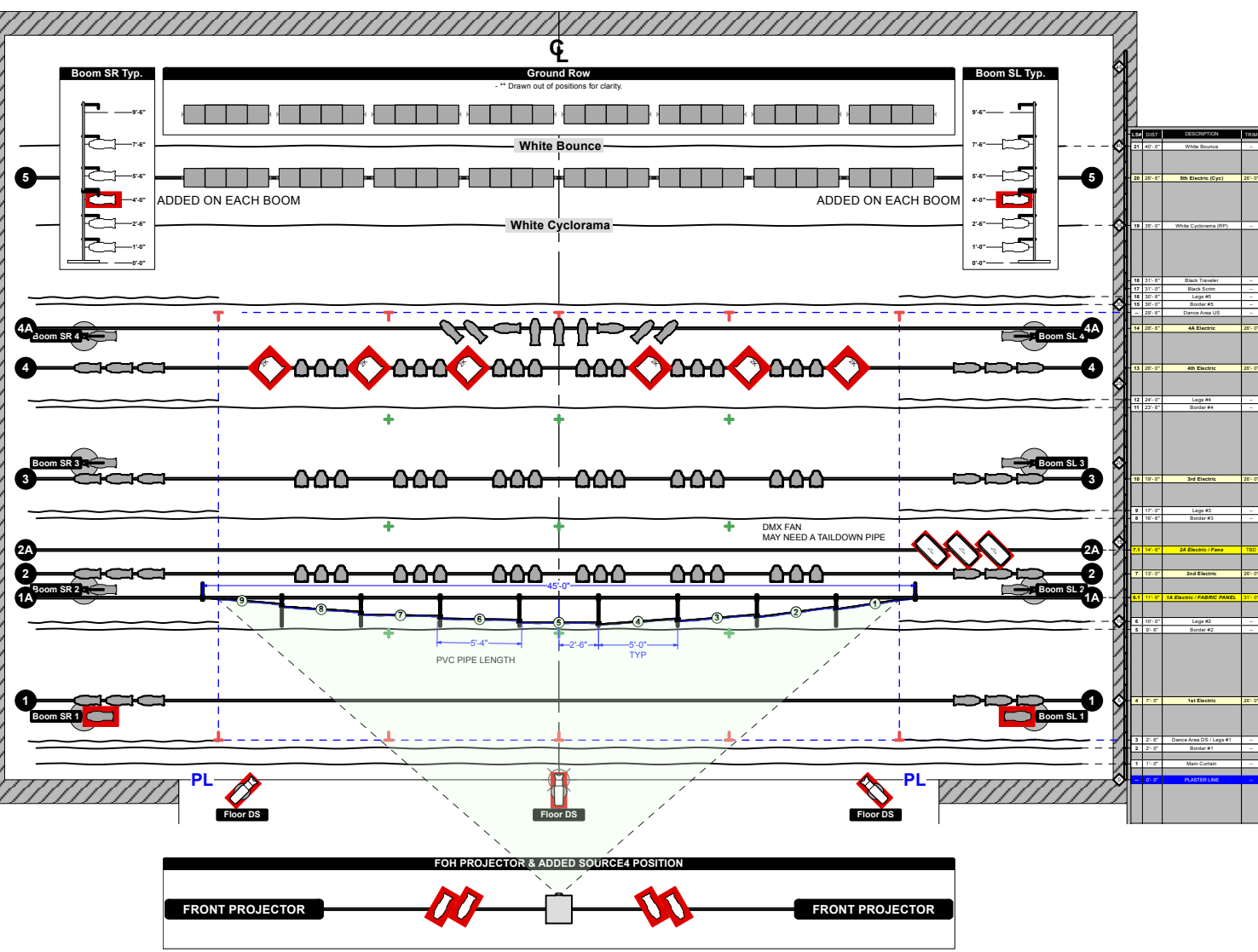
APPENDIX C-4: Walking Out the Dark



NOTES:

“Walking Out the Dark” requires a fly system to operate two (2) 40'-0" wide snow bags (provided by the Company) for a falling dirt effect. Two (2) packages of 50lbs rubber crumbs and two (2) snow bags will be shipped to/from the venue by the Company. If the Presenter’s stage house is NOT equipped with a fly system, special arrangements must be made with the Company Technical Director that may include the rental of added pipe and hardware. Shipping of each way costs about \$150.

APPENDIX C-5a: The Equality of Night and Day



NOTES:

“The Equality of Night and Day” (TEND) has Nine (9) fabric panels that serve as a front projection surface. Each panel consists of Two (2) @ 1" PVC pipes, a Coupler, and a piece of IFR fabric from Rose Brand. The fabric is attached to the PVC pipes with Velcro. The width of each panel is 5'-4", and the height is 8'-0". The total width of the Nine (9) panels is about 45'-0". The bottom of the panels is about 10'-0" from the Stage Deck.

The Company travels with the pipes, fabric and the hardware (Aircraft wire, Griplock and hanging straps). For hanging the panels, the venue should provide:

- Eight (8) to Ten (10) @ Side Arms - 18" to 24" long

The venue also requires to provide:

- Front Projector ... 10,000 Lumens or more
- Computer with QLab5 installed (Professional Video)
- Two (3) @ DMX Controllable Fans ... For blowing the panels from the sides
- Three (3) @ ETC Source4 Lustr 2 with 90° Lens with Floor Plates
- Two (2) @ ETC Source4 36° Lens on Boom SL 1 and Boom SR 1

APPENDIX C-5b: *The Equality of Night and Day*



* The photos show Eight (8) Panels version with 35'-0" stage width *

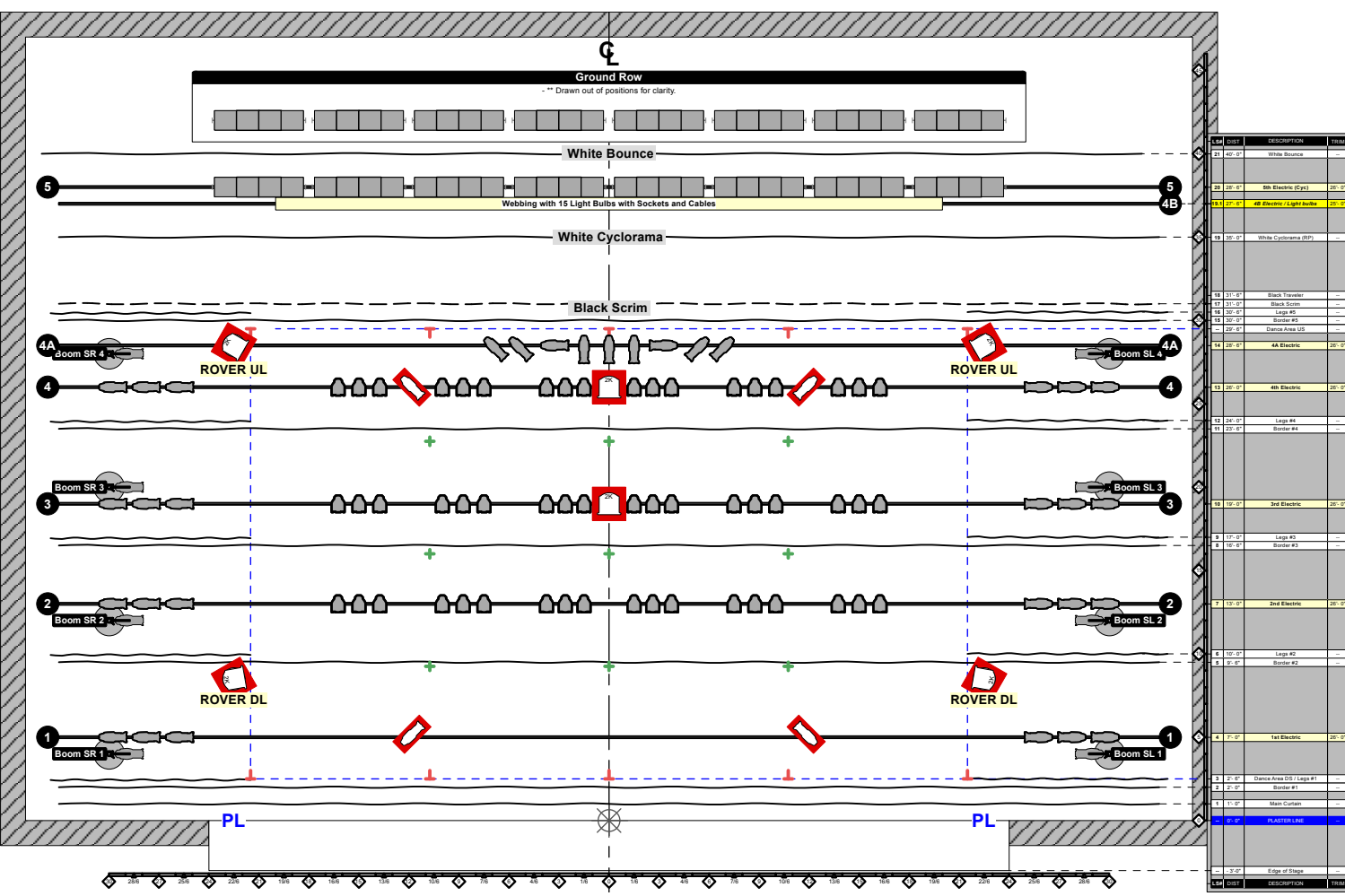
NOTES on Transporting:

The Panels will be traveled with the Company with a large suitcase.

- One (1) Large Suitcase - 22W x 36H x 11D contains ...
 - Nine (9) sets of 1" PVC Pipes
 - Hardware
 - Nine (9) pieces of IFR Fabric
 - Weight about 50lbs.



APPENDIX C-6a: Percussion Bitter Sweet: Tender Warriors



NOTES:

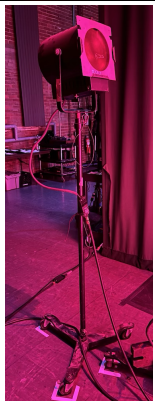
For *Percussion Bitter Sweet: Tender Warriors*, the Company will bring a 40-foot long Webbing, with cables and sockets attached, for glow light effects on Cyclorama. The webbing needs to be hung Upstage of Cyclorama to create the effects. There are Fifteen [15] zip-cord cables with edison connectors, and sockets for regular light bulbs attached to the webbing. The lightbulbs need to be: A-type 40w soft white light bulbs, or a similar wattage. They cannot be LED or CFL bulbs. The webbing has tie-lines attached for hanging on a lineset. The venue needs to provide the following items:

- A working lineset Upstage of Cyclorama - Please discuss if the venue does not have a fly system
- Five [5] dimmable circuits
- Fifteen [15] A-type 40w warm white light bulbs - Please check the type with the Company TD

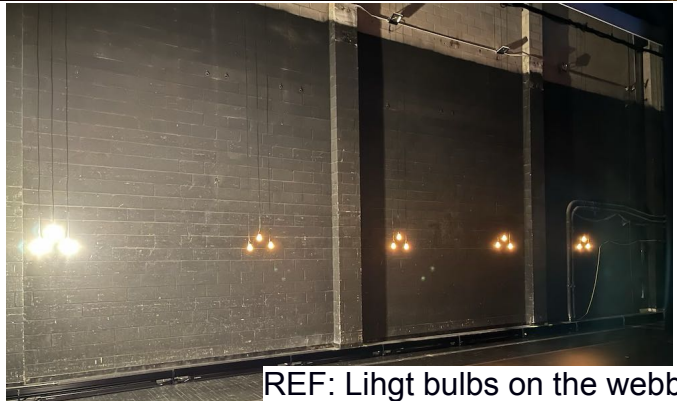
The piece also requires:

- Four [4] sets of 2K Fresnel on a Rover.
- Two [2] 2K Fresnel
- Four [4] Source4 36°
- Hazer

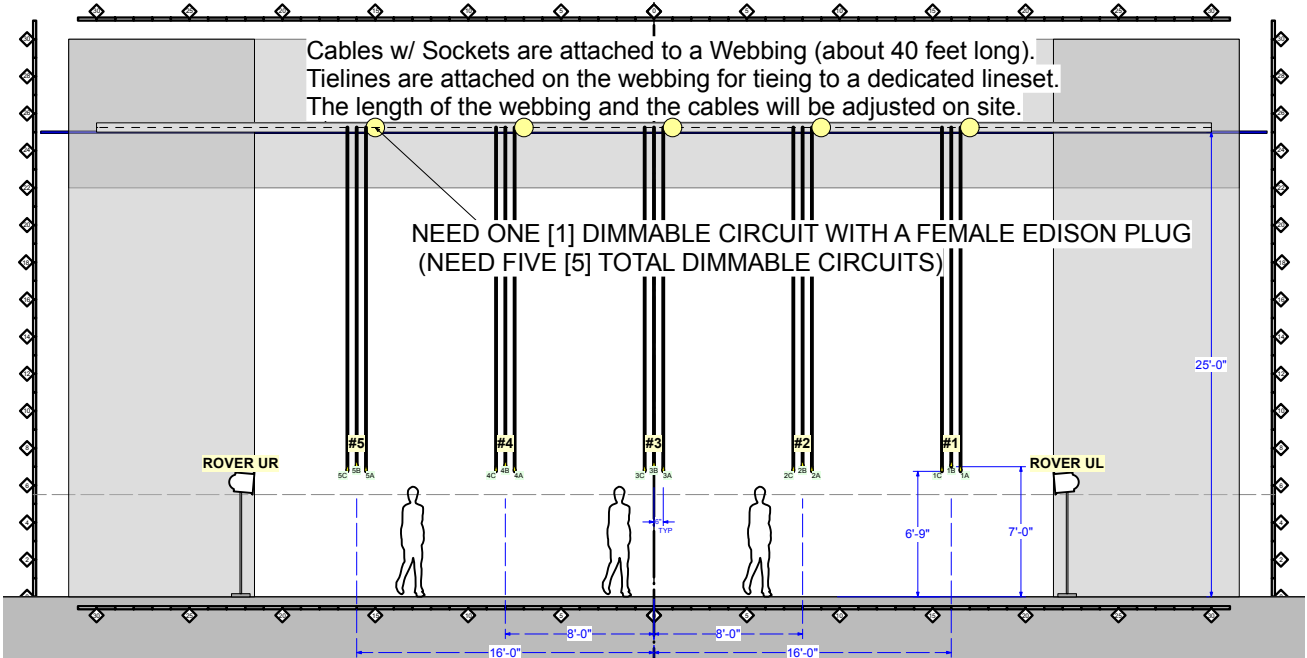
APPENDIX C-6b: Percussion Bitter Sweet: Tender Warriors



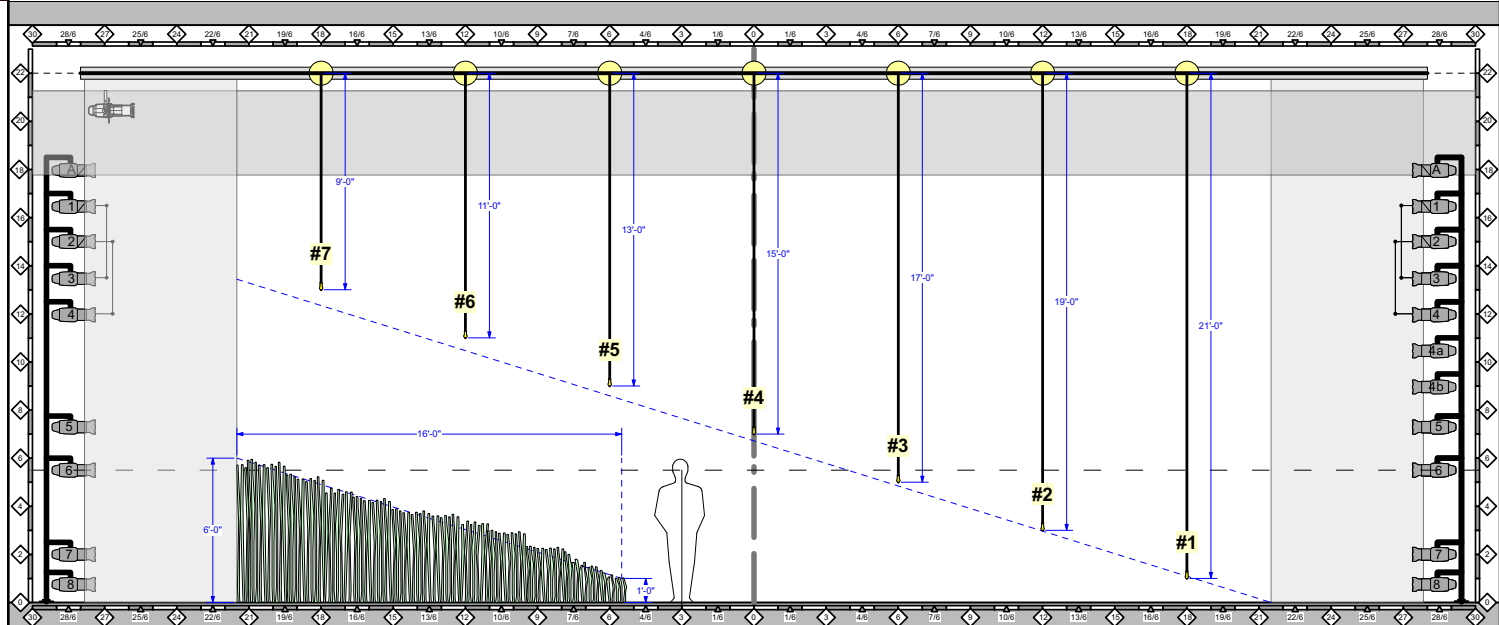
REF: 2K Fresnel on a rover.



REF: Light bulbs on the webbing.



APPENDIX C-7: Serving Nia



Light bulbs on a webbing:

- Hung US of Cyc
- Need [7] dimmable circuits
- Need [7] female Edison plugs

APPENDIX D-1: Prop Notes - "High Life"



NOTES:

"High Life" requires five (5) to six (6) vintage suitcases and one (1) African bag and one (1) dolly. Suitcases will need to be either shipped by the Company or substituted with any vintage-looking suitcases by the Presenter. All suitcases should be about **24"W x 18"H x 9"D.** The total cost of shipping of all suitcases is approximately **\$200**, each way. African bag will be brought by the Company. The Company uses a dolly from the venue. The size should be approximately 30" x 18".

APPENDIX E-1: Sound Notes - "New Conversations: Iron Meets Water" (Live Music)



NOTE:

"New Conversations: Iron Meets Water" is performed either with live music or with recorded playbacks. For live music performed by Arturo O'Farrill and Resist, the band is consisted of one (1) Grand Piano, one (1) Flute and Piccolo, one (1) Tuba, and two (2) Percussions. The Presenter should supply:

- (1) Grand Piano
- (1) Piano bench
- (1) Music rack for Grand Piano and a Desk lamp (or equivalent)
- (7) Microphone (Two (2) for each percussionist)
- (4) Monitors – One (1) for Piano, Flute, Tuba, and one (1) for Percussions
- (4) Chairs without armrests
- (4) Music stand
- (4) Music stand lights
- (1) Drum screen (Drum shield) between Tuba and Percussions
- (5) Water bottle for each musician

The locations of the band and the configuration will be determined specifically for each venue.