

Amendments to this rider must be approved by both Reggie Wilson/Fist & Heel Performance Group (*RWFHPG*) and the Presenter prior to the signing of this or the engagement contract. This is a technical rider and does not constitute the full understanding of the engagement between RWFHPG and the Presenter. In the event that the performance venue is different from the Presenter's facility, the Presenter assumes responsibility to forward this information to the appropriate theater manager for approval, understanding that the Presenter remains fully liable for the assurance that all the following listed conditions are met by the theater manager.

Theater's technical specifications, along with an inventory of theater's lighting and sound equipment must be received within 120 days of anticipated performance.

DRESSING ROOMS

- 2 Large heated dressing room with 8 chairs and makeup mirrors per room.
- Dressing rooms should be easily accessible to the performance stage.
- Please provide at least 11 towels - 1 for each dancer. Spares would be appreciated.
- If the stage is not available 3 hours before performance, then a heated studio with ballet barres for 11 dancers should be made available for company class/warm-up before all rehearsals or performances.
- On days of dress rehearsal or performance at least one hot water and tea service for all performers 2 hours before show/rehearsal call.
- Paging system from the booth to the dressing rooms.

WARDROBE

- Note, many of the items require hand washing.
- Ironing equipment, steamer, as well as laundry facilities (including drying racks and fans) and starch for wardrobe should be available starting on the first day, as well as before and directly after each performance (including the dress rehearsal).
- Majority of costumes are batik dyed. Presenter will provide additional fabric (muslin or canvas) to be placed between iron and board, to prevent transfer from costumes to equipment.
- In order to care for the 80 Costume pieces in this performance, two (2) Wardrobe crew are requested as follows:

Wardrobe Day 1

4 hours: unpack, steam, sort and hang costumes.

Wardrobe Day 2

8-12 hours: learn costume preset, support technical & dress rehearsals, then launder.

Wardrobe Day 3

8 hours: Reset for top of show & post performance launder.

Wardrobe Subsequent Days

8 hours: Reset for top of show & post performance launder.

Note, call wardrobe call is required after final performance to wash, dry, and pack for travel.

STAGE

- Stage area should be clean, safe, and heated to a minimum of 74 degrees Fahrenheit.
- Stage should be a minimum of 35'-0" deep from downstage edge to upstage wall.
- Stage should be a minimum of 42'-0" wide from wing to wing.
- The stage should be a sprung floor.
- The production utilizes a black Marley provided by the venue.
- The floor should be swept and mopped 1 hour before every performance or rehearsal.

SCENERY

- The performance requires all traditional dance repertory masking be struck (or flown clear from sightlines). This includes all borders and leg configurations.
- Additionally, the performance requests that production equipment such as lifts, ladders, and venue storage (such as orchestra shells), should be removed from sightlines. For items which cannot be relocated, masking options can be discussed with RWFHPG.

Cyc Treatment

- Production uses one white cyclorama, one white bounce and one tall black border.
- Cyc stretchers will be needed for the cyclorama.

Shaker Bench

- The performance requires one wooden Bench approximately 2'-0" wide x 8'-0" in length. RWFHPG does not travel with this item, therefore it must be provided by venue. The ideal bench should be beautifully weathered and able to seat 3 people. See example at end of this rider for more information.

Shaker Peg Rails

- The performance will require the installation of two Shaker Peg Rails DSR, possibly down stage of the plasterline (exact location tbd upon review of venue's drawings).
- RWFHPG will ship the rails to the venue prior to the performance, but mounting options for the rails must be discussed. See example at end of this rider for more information.

Book Light

This is an illumination technique primarily found in the film industry. It will occupy an 8'x8' area offstage in the DSL corner and shall remain in place for the duration of the performance. The Book Light utilizes a cluster of lights focused onto a white muslin. The reflected light from this surface passes through a grid cloth onto the stage. RWFHPG will ship the Muslin and Grid Cloth in advance, but the venue will need to construct a frame prior to the RWFHPG's arrival. Materials required for frame construction include:

- 2 (two) frames made of Kiln dried 2x4's for fabrics.
- Spare Kiln dried 2x4's for stabilization
- Duvetyn for masking the back and top of booklight

Please see images attached at the end of this rider for dimensions needed when constructing the Booklight.

Mini Cyc

A small rectangular plastic covered frame is located MSR and is referred to as the Mini Cyc. RWFHPG will ship the plastic cover in advance, but the venue will need to construct a frame prior to the company's arrival.

Materials required for frame construction include:

- 1 (one) frame made of Kiln dried 2x4's
- Spare Kiln dried 2x4's for stabilization

Please see images attached at the end of this rider for dimensions needed when constructing the Mini Cyc.

LIGHTING

- RWFHPG does not carry any lighting equipment. Presenter agrees to pre-hang RWFHPG light plot prior to load-in. Pre-hang will include hanging and/or installing all lighting equipment, cabling, patching, and verifying that all equipment is in good working order.
- RWFHPG Production Manager must receive inventory of theater's lighting equipment and technical specifications, within 120 days of anticipated performance.
- RWFHPG will provide a light plot to the presenter in advance of engagement. The light plot is standard, and every effort will be made to fit the circumstances of each theater whenever possible. Light plot will take into account but not necessarily be limited by equipment inventory. The Presenter agrees to provide all gels and accessories as specified in the light plot.

Special Lighting Equipment

As part of the lighting package the following equipment shall be required:

- Four (4) ChromaQ Colorforce 12" with Cyc Lenses. Units shall be deck mounted.
- Fourteen (14) ChromaQ Colorforce 72" with Cyc Lenses. Units shall be evenly split between overhead and deck for cyc lighting).
- Two (2) 2000k Fresnel with floor plates (deck-mounted for Book Light)
- Two (2) Mole-Richardson Type 2591 softlights with Two (2) 24" single tee sidearm. Mole-Richardson fixtures hung on tail down pipe, trim to lowest fixture is 14' from deck. See example image at the end of this rider.
- One (1) roll of Blacktack and One (1) roll of blackwrap

Computer Lighting Board

- Presenter agrees to provide and pay for a computer memory lighting board and a trained and skilled operator for that lighting board. Any of ETC's Eos consoles are acceptable.

TECH TABLE

- A Tech Table is required in the center of the auditorium for all Company technical rehearsals.
- Tech Table will be equipped with remote monitors for lighting as well as a headset for communication with the lighting, & sound operators.
- A switchable wireless microphone will be required at the tech table for all rehearsals.
- RWFHPG's Stage-manager will call the show from a front of house position during the dress rehearsal and all performances. A screen from the lighting console showing the cue list / playback status is required (an iPad is an acceptable screen).

SOUND

The performance is comprised of cued playback as well as live singing. The venue is required to provide the following:

- A computer with Qlab v4 installed for audio playback (the company does not travel with a computer for audio).

Microphones

- 4 Countryman B-6 head worn lavalier microphones or similar.
- Professional dual-diversity uhf transmitter/receivers are required.
- Fresh batteries for the transmitters for dress rehearsal and performances
- Non lubricated condoms to protect IEM.
- 3m Tegaderm tape for securing microphones.
- One floor Microphone at Shaker Bench DSR

PA system

- A stereo full range FOH speaker system (with subwoofers) on level with EV – Delta max, Apogee AE-5, EAW, Meyer or similar.
- A good quality fold-back monitor system to allow dancers to hear the FOH mix from any part of the stage.
- One wedge monitor with separate mix from fold back system at Shaker Bench DSR. Placement and mix to be determined by Artistic Director.
- A Good quality 16 x 4 sound desk with at least 2 pre-fade and 2 post-fader aux outs, phase reversal, Mute masters, at least 2 sweep-able parametric mid e.q., hi-pass filter and at least 6 balanced inputs with insert capability and 6-line level in puts. Midas, Cress, Yamaha QL1 or the similar.

Sound desk should be in the house (as opposed to in the booth) as level changes are necessary during the technical rehearsals and throughout the performance.

Headset communication system

- The system should be free of noise / hum prior to the company's arrival.
- A headset will be required for all operators (Lighting, Sound) as well as backstage and at the tech table.

Boom Box

- For onstage company classes, an audio system with 1/8" jack (equivalent to a boom box) will be required down stage, operated by the dancers during crew breaks. Convenience outlet required as well to power a laptop – a long extension cord / power strip would be suitable.

Recommended Outboard equipment

The following equipment is recommended as it will aid the audio engineer

- 2 good quality stereo compressor/limiters.
- 1 good reverb effects unit lexicon mpx 500 or the like.
- 4 insert cables.
- Patch cables for reverb unit.

Note: The singers will be moving around throughout the performance. This includes rolling on the floor, as well as contact with one another while singing. There are also numerous costume changes. Phase cancellation and feedback are constant concerns during this piece.

HOSPITALITY

To be always available in the Green Room:

- Drinks: Sparkling water - San Pellegrino (Plain and Flavored)
Still bottled "spring" water. (No Dasani or Aquafina)
Hot coffee (Dark roast)
Hot Tea (Earl Grey, Green, black)
Honey, lemons, soy milk, regular milk, half and half
- Snacks: Apples, Oranges, Bananas, citrus fruits, pineapples, kiwi, strawberries, berries
Fage brand Greek yogurt (Peach, honey, strawberry)
Honey Roasted almonds
Smoked Almonds
Organic Energy Bars (Lara bar, Kind Bar)
60-80% Dark Chocolate bars
Cookies
Potato Chips (Kettle cooked)
Konditori Wafers (Chocolate + Vanilla)
- Meals (for days with DRESS + SHOW).
Grilled chicken (other grilled meats acceptable by some but not all)
Rice (white, brown, yellow, pilaf are all acceptable)
Kale Salad
Other salads (green, et al; may include potato, cole slaw, beet, vegetable)
Pizza (Meat and Vegetarian options)
Olives
Fine cheese assortment
Meat (Charcuterie) tray
Pita bread, Pita chips
Hummus
Falafel
Chicken fingers
Shrimp Cocktail
- Alcohol (These are the drinks we love. FYI)
Beer: (IPA)
Wine: (Chardonnay, Pinot Gris, Pinot Grigio)

Allergies

There are individual allergies to: pollen, penicillin, stone fruits, apples, pears, flat fishes (like flounder and halibut) Aspirin, and ibuprofen.

It should be noted that these are specific to individual allergies (not the entire group) and are provided not to restrict by any means all provisions, but that notification needs to be clearly made if any of the allergens or restrictions are present.

SAMPLE SCHEDULE

The following is an outline of time & labor required for the performance.
Please discuss local work rules which need to be considered.

Note: This schedule is contingent on the following items having been completed prior to the company's arrival:

- Light plot is hung, circuited, rung out, and color is dropped.
- Black dance floor (Marley) is taped down
- Changes to masking, as agreed to in advance with RWFHPG, in place
- Sound system in place.
- Tech table with monitors (for light board) and headset (communication) set up.
- Scenic items constructed and installed (Shaker Bench, Shaker Pegs, Book Light, Mini Cyc)

On travel day, the company requests 1 hour of stage access to deliver wardrobe items and a walk thru to confirm location of scenic items. Venue's technical director and 2 stagehands should be present to adjust location of items if needed. Coordination of walk thru to be arranged with company's production manager prior to travel day.

Travel Day: Wardrobe Drop-off & walkthrough

Time		Fist & Heel	Detail	Crew Required
tbc	tbc	Reggie Wilson Company Manager Production Manager	Costume drop-off venue walkthrough	Venue's Technical Director 2 Stagehands

1st Day: Scenic Notes & Lighting Focus

	Time	Fist & Heel	Detail	Crew Required
09:00	9a	Production Manager	Lighting Focus	5 Electricians (Includes 1 head electrician & 2 focus teams) 1 Fly Person (if applicable)
	9a	Company Manager	Unpack & Steam Costumes	2 Wardrobe
12:00	12p	Reggie Wilson	Reggie Wilson arrives, Provides notes on scenic layout, adjustments made as needed.	Add 2 Carpenters
13:00	1p		Lunch, 1hr	All
14:00	2p		Continue Lighting Focus	5 Electricians (Includes 1 head electrician & 2 focus teams) 1 Fly Person (if applicable)
14:30	4:30p	Performers arrive	Dressing rooms available	
17:00	5p		Dinner	All
			Note: work light spacing rehearsal on stage during crew's meal break.	

Reggie Wilson Fist & Heel Performance Group.
Technical Rider: "POWER"

1st Day: Load In & Spacing Rehearsal Continued

Time	Fist & Heel	Detail	Crew Required
18:00 6p		Spacing Rehearsal with Run Crew	1 Light Board Op 1 Sound Engineer 1 Back Stage Technician
21:45 9:45p		End of onstage activities	
22:00 10p		End Of Day	All

Reggie Wilson Fist & Heel Performance Group.
 Technical Rider: "POWER"

2nd Day: Cue to Cue & Dress Rehearsal

	Time	Fist & Heel	Detail	Crew Required
09:30	9:30a	Production Manager	Production notes as needed	1 Light Board Op 1 Sound Engineer 1 Back Stage Technician
11:30	11:30a	Reggie Wilson Rhetta Aleong Lawrence Harding	Sound Check Wardrobe learns preset Production notes as needed	Same as Above Add 2 Wardrobe
13:00	1p		Lunch, 1hr Note: work light spacing rehearsal on stage during crew's lunch break	All
14:00	2p	All	Crew & Performer introductions	1 Light Board Op 1 Sound Engineer 1 Back Stage Technician 2 Wardrobe
14:10	2:10p		Cue to Cue With sound & lighting	Same as Above
18:00	6p		Dinner	All

Reggie Wilson Fist & Heel Performance Group.
 Technical Rider: "POWER"

2nd Day: Cue to Cue & Dress Rehearsal

	Time	Fist & Heel	Detail	Crew Required
19:00	7p		Sweep / Mop	
19:30	7:30p		Reset for Top of Show	Same as Above
20:00	8p		Dress Rehearsal	
21:00	9p		End of Run (estimated) Begin Laundry Production notes as needed	
22:00	10p		End of stage activities	All Note: Wardrobe remains till costume care is complete

Reggie Wilson Fist & Heel Performance Group.
 Technical Rider: "POWER"

3rd Day: Performance #1

	Time	Fist & Heel	Detail	Crew Required
14:00	2p	Production Manager	Production notes as needed	1 Light Board Op 1 Sound Engineer 1 Back Stage Technician 2 Wardrobe
16:00	4p		Preshow System checks Sweep / Mop	All
16:30	4:30p	All	Stage & Dressing rooms available for performers to warm up / stretch	
17:30	5:30p		Dinner Company warms up on stage during crew's dinner break	All
18:30	6:30p		Production Notes onstage with Dancers	Same as Above
19:30	7:30p		Half Hour	
19:45	7:45p		House Opens	
20:00	8p		Performance	
21:00	9p		(Estimated) End Of performance Begin Costume Care	Note: Wardrobe remains till costume care is complete

Subsequent Days: Performance, 8p

	Time	Fist & Heel	Detail	Crew Required
15:00	3p	Production Manager	Production Notes as Needed	1 Light Board Op 1 Sound Engineer
			Preshow System checks Sweep / Mop	1 Back Stage Technician 2 Wardrobe
			Studio & Dressing rooms available for performers to warm up / stretch	
17:30	5:30p	All	Dinner Company warms up on stage during crew's dinner break	All
18:30	6:30p		Production Notes onstage with Dancers	Same as Above
18:30	7:30p		Half Hour	
18:45	7:45p		House Opens	
20:00	8p		Performance	
21:00	9p		(Estimated) End Of performance	
			Begin Costume Care	Note: Wardrobe remains till costume care is complete.

Note: Company travels with clean costumes after the final performance.

Reggie Wilson Fist & Heel Performance Group.
Technical Rider: "POWER"

Agreed,

Name: _____

Signature: _____

Date:

Representative Presenter

Name: _____

Signature: _____

Date:

Representative Reggie Wilson/Fist & Heel Performance Group

CUT LIST FOR 2x4 FRAMES

BOOKLIGHT

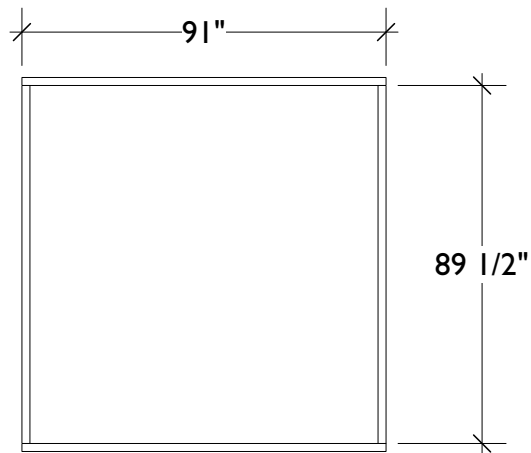
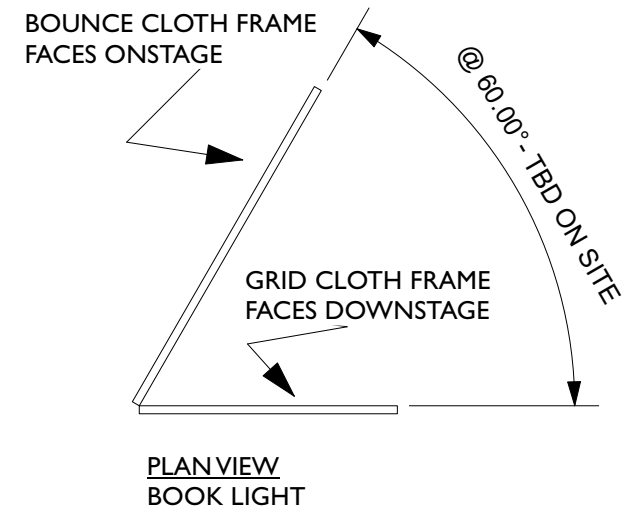
GRID CLOTH FRAME –

RAILS:	TWO AT	91"
STILES:	TWO AT	89 1/2"

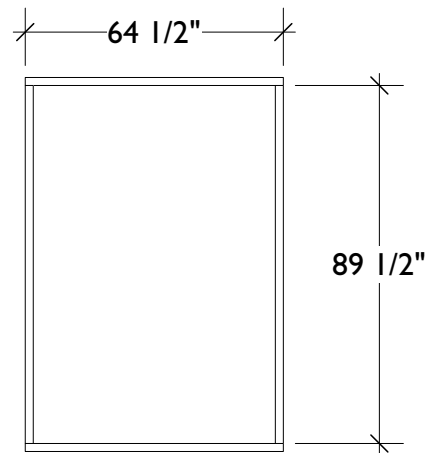
BOUNCE CLOTH FRAME –

RAILS:	TWO AT	64 1/2"
STILES:	TWO AT	89 1/2"

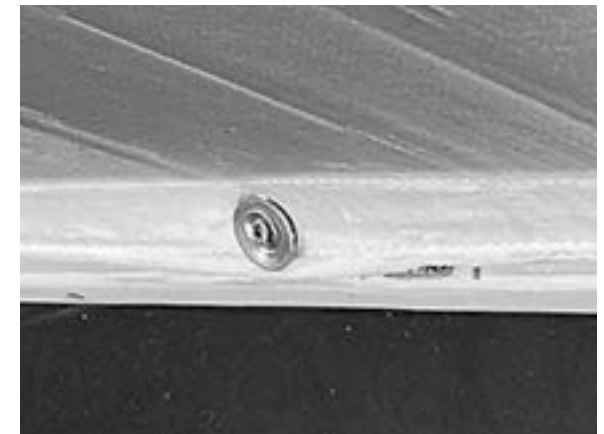
NOTE: ANGLE OF FRAMES DETERMINED ONSIGHT BY ARTISTIC DIRECTOR.
PLEASE HAVE ONE 96" 2x4 AVAILABLE FOR USE AS CROSS BRACE, CUT TO FIT



ELEVATION
GRID CLOTH FRAME
FOR BOOK LIGHT
BUILD I



ELEVATION
BOUNCE CLOTH FRAME
FOR BOOK LIGHT
BUILD I



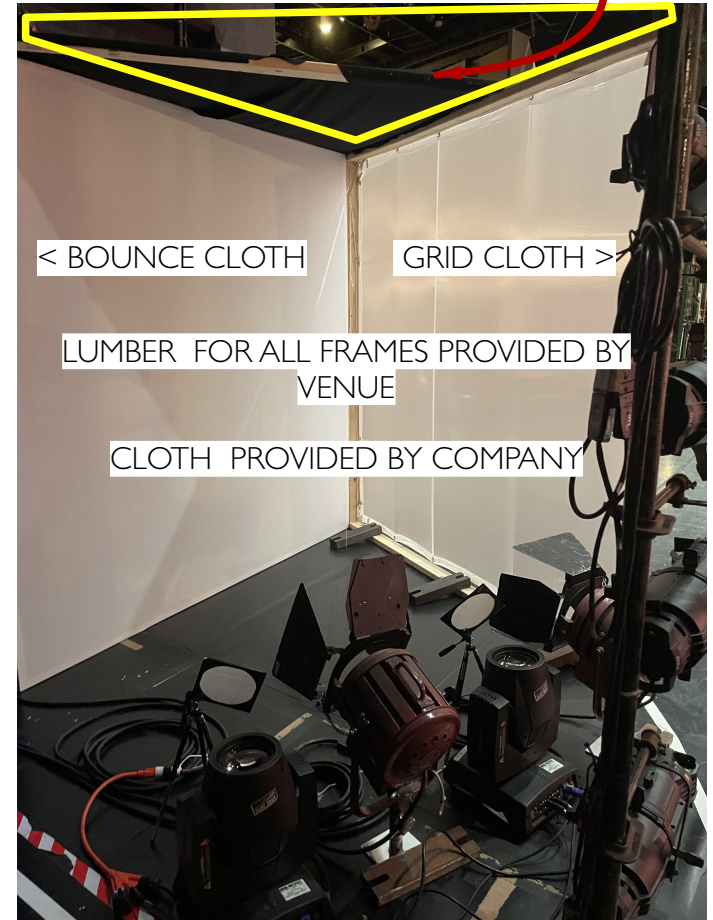
DETAIL
GRID CLOTH ATTACHMENT FOR BOOK LIGHT

BLACK DUVETYNE ,
ATTACHED TO DS SIDE OF STRUCTURE, PROVIDED BY VENUE



BOOK LIGHT EXAMPLE

BLACK DUVETYNE HOOD, ATTACHED w/
SPRING CLAMPS TO TOP OF STRUCTURE,
PROVIDED BY VENUE



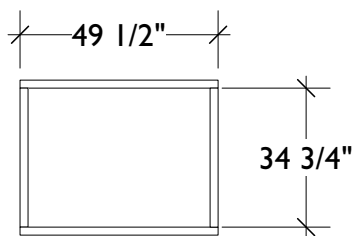
For a short primer on basic Booklighting please visit: <https://www.youtube.com/watch?v=7TrT6UXcf4g>

CUT LIST FOR 2x4 FRAMES

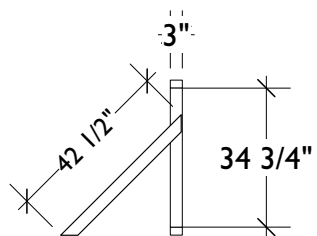
MINI CYC

FRAME FOR RP MATERIAL –

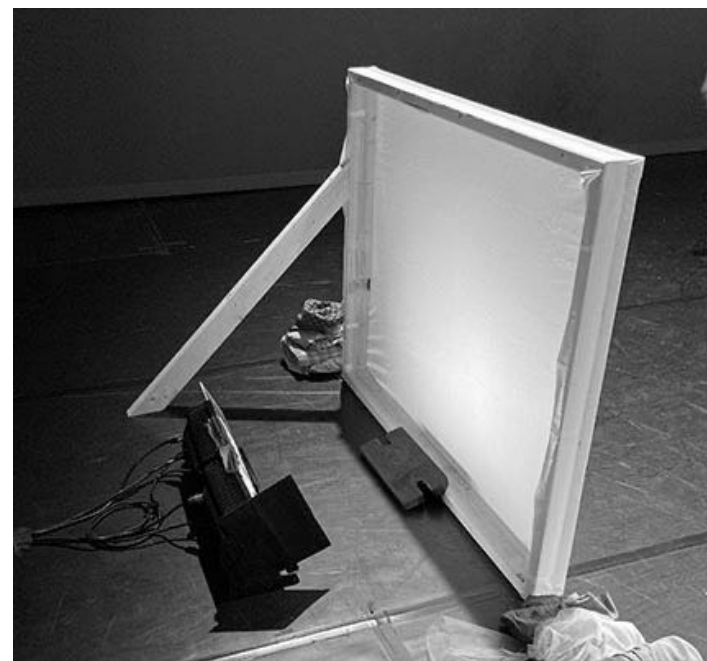
RAILS:	TWO AT	49 1/2"
STILES:	TWO AT	34 3/4"
JACK:	ONE AT	42 1/2"
NOTE -	CUT 45° AT EACH END OF JACK	



FRONT ELEVATION
RP FRAME FOR MINI CYC
BUILD I

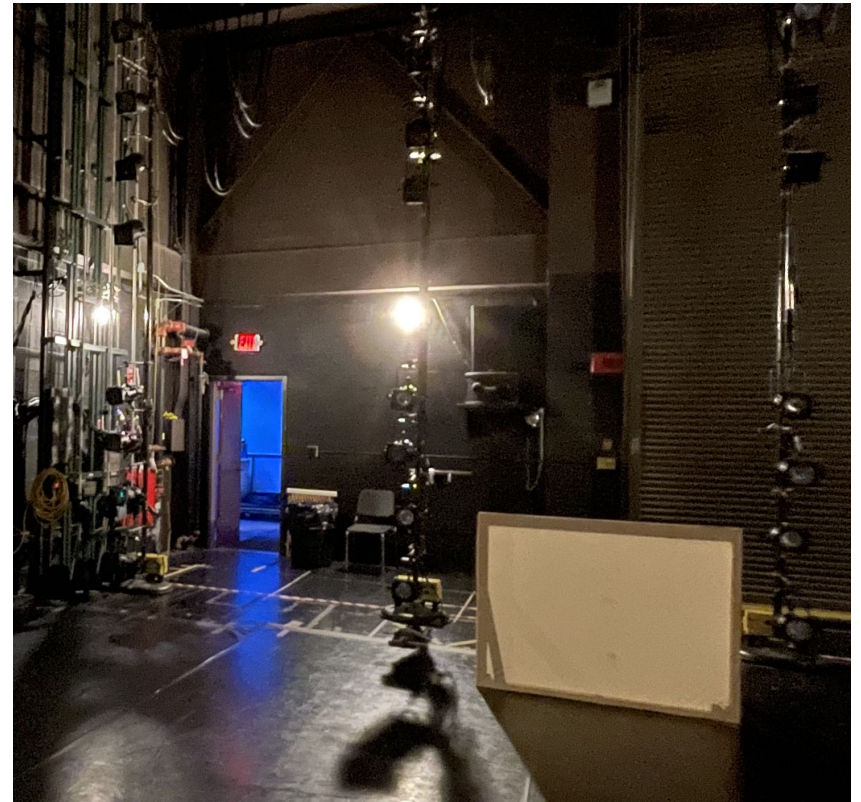


SECTION
JACK FOR MINI CYC
BUILD I

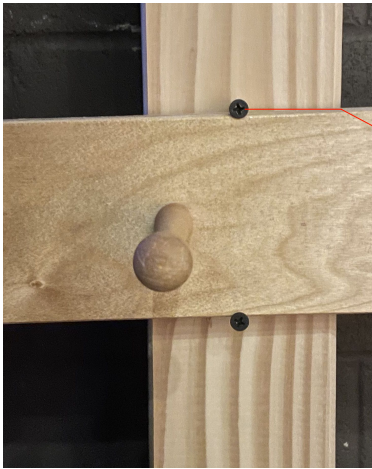




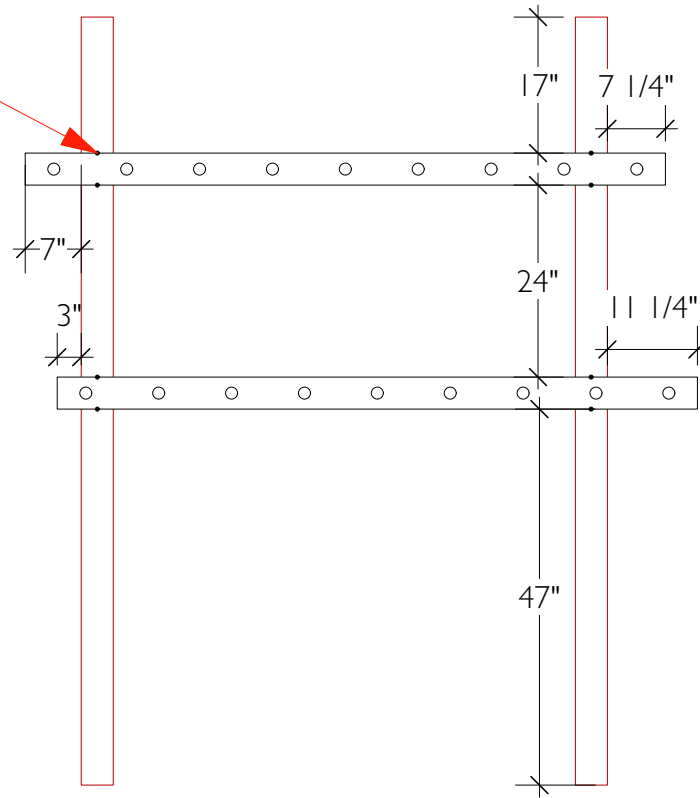
MINI CYC EXAMPLE
CLOTH PROVIDED BY COMPANY
STRUCTURE PROVIDED BY VENUE



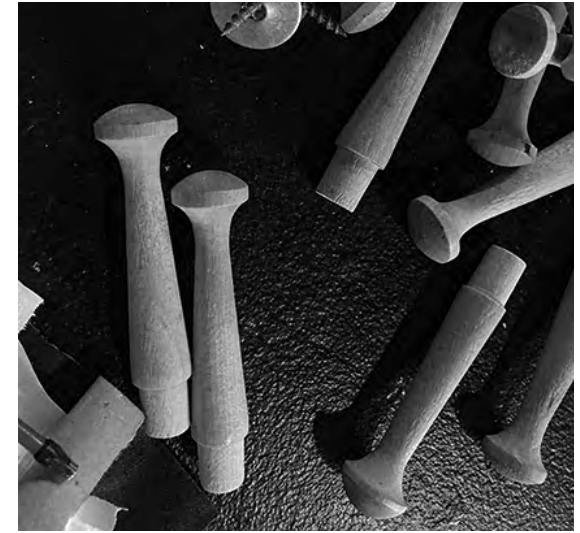
MINI CYC EXAMPLE
CLOTH PROVIDED BY COMPANY
STRUCTURE PROVIDED BY VENUE



MOUNTING DETAIL:
PEG RAIL TO VERTICAL SUPPORT



EXAMPLE OF VERTICAL SUPPORT
NOTE: VERTICAL SUPPORT
STRUCTURE PROVIDED BY VENUE
DISCUSS MOUNTING OPTIONS
FOR PEG RAIL

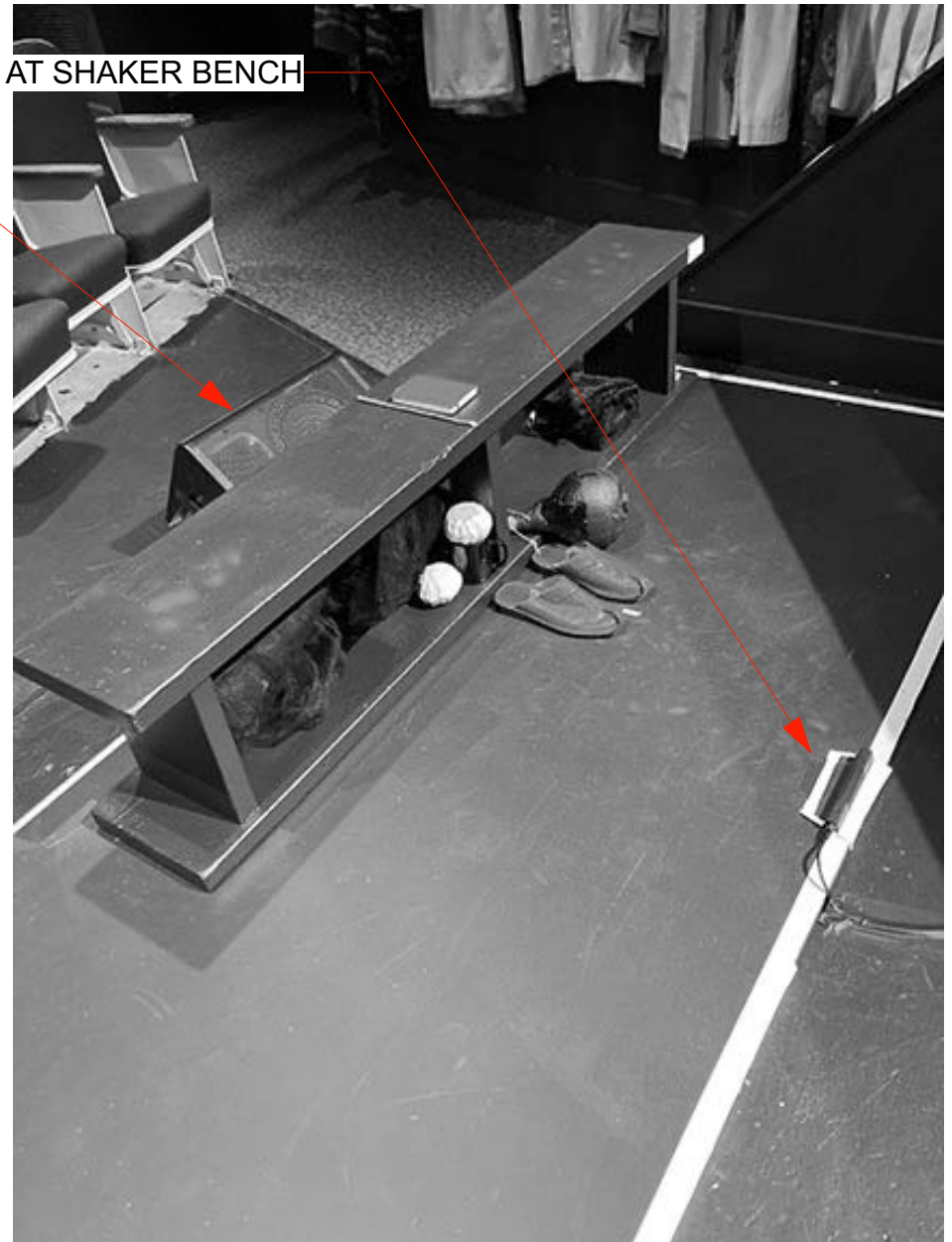


PEG DETAIL
SHIPPED LOOSE
ATTACHED W/ SHORT
DRYWALL SCREW
THROUGH BACK OF BOARD



FLOOR MIC AT SHAKER BENCH

WEDGE MONITOR AT SHAKER BENCH





EXAMPLE OF FIXTURE HANG
FOR TAILDOWN

2,000 Watt Molequartz® Baby "Zip" Softlite



SPECIFICATIONS

Head:	Type 2591, 2,000 Watts
Rating:	120/240 volts, A.C. or D.C., 16.7 amps max. - 2,000 watts max.
Socket:	Compressed single contact (two per globe)
Switch:	2 toggle switches (One per globe)
Cable:	Attached 25 ft., Type SO, 3 conductor #14 AWG with Edison plug
Construction:	Solid and perforated sheet steel
Yoke:	Cast aluminum. Fits any standard 5/8" stand spud or 3/8" hanger spud
Reflector Surfaces:	Globe Trough: Molebrite® specular aluminum Reflecting Hood: Special diffusion coating
Finish:	Maroon powder coat enamel
Size:	8" x 17 1/2" aperture
Weight:	13 3/4 lbs. (w/ cable)