

BEREISHIT

브레시트
DANCE
COMAPNY



Gyeong In

CONTACT | Tel. +82 (0)10 4783 3898

e-mail | 2673898@gmail.com / ok.roya@gmail.com

ADRESS | Rm. # 201-ho, 25-1, Jinheung-ro 19-gil Eunpyeong-gu KR-122-847 Seoul, Korea

CONTENTS

I. General Information

II. Stage

- Stage
- Stage plan
- Props.

III. Lighting

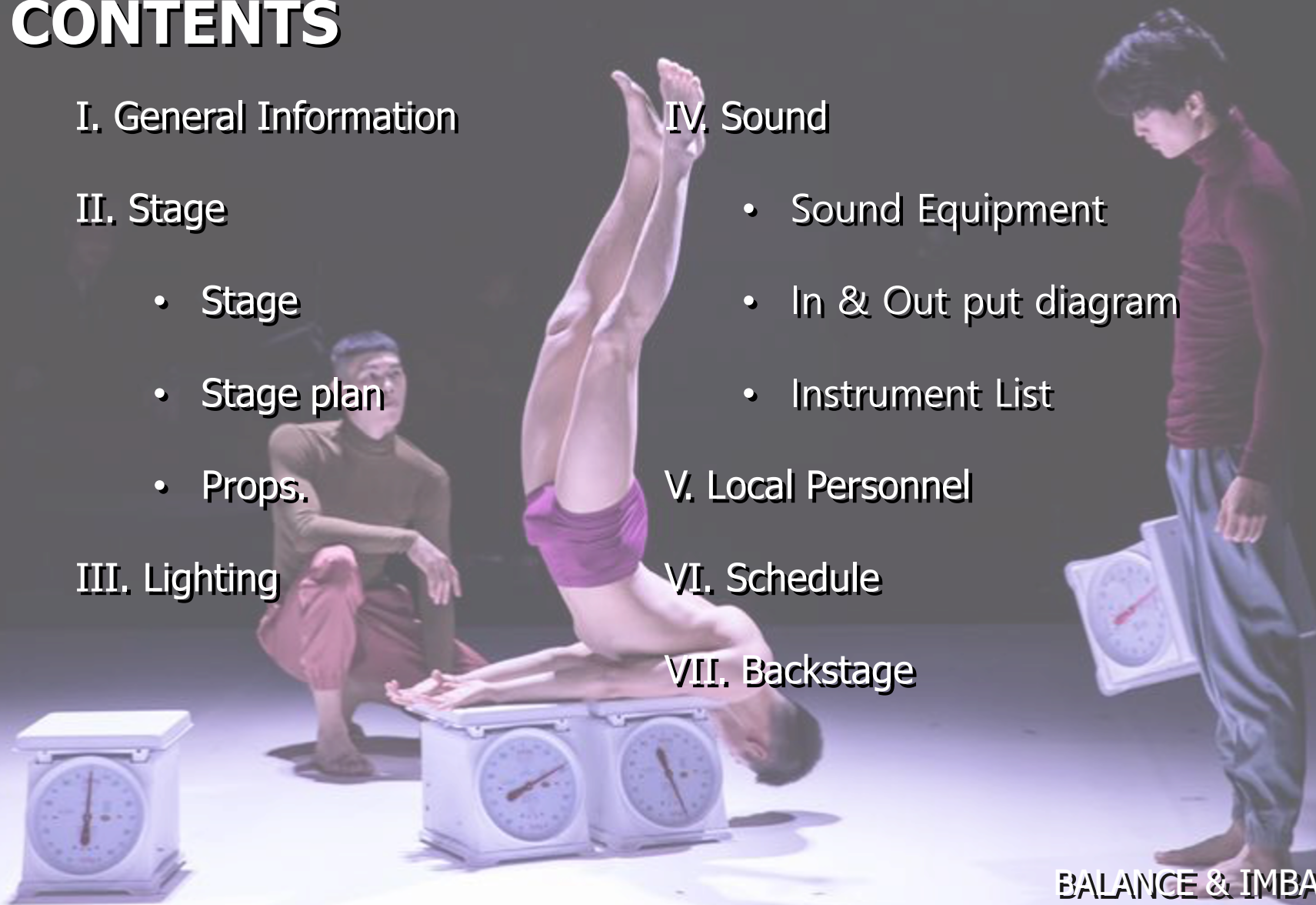
IV. Sound

- Sound Equipment
- In & Out put diagram
- Instrument List

V. Local Personnel

VI. Schedule

VII. Backstage



■ GENERAL INFORMATION

- Name of Company | Bereishit Dance Company
- Title of the Performance | Gyeong in
- GENRE | Contemporary Dance (3 Dnacers)
- RUNNING TIME | 30 minutes
- CONTACTS

E-Mail | 2673898@gmail.com / ok.roya@gmail.com

Mobile Phone | 010-4789-3898

■ STAGE

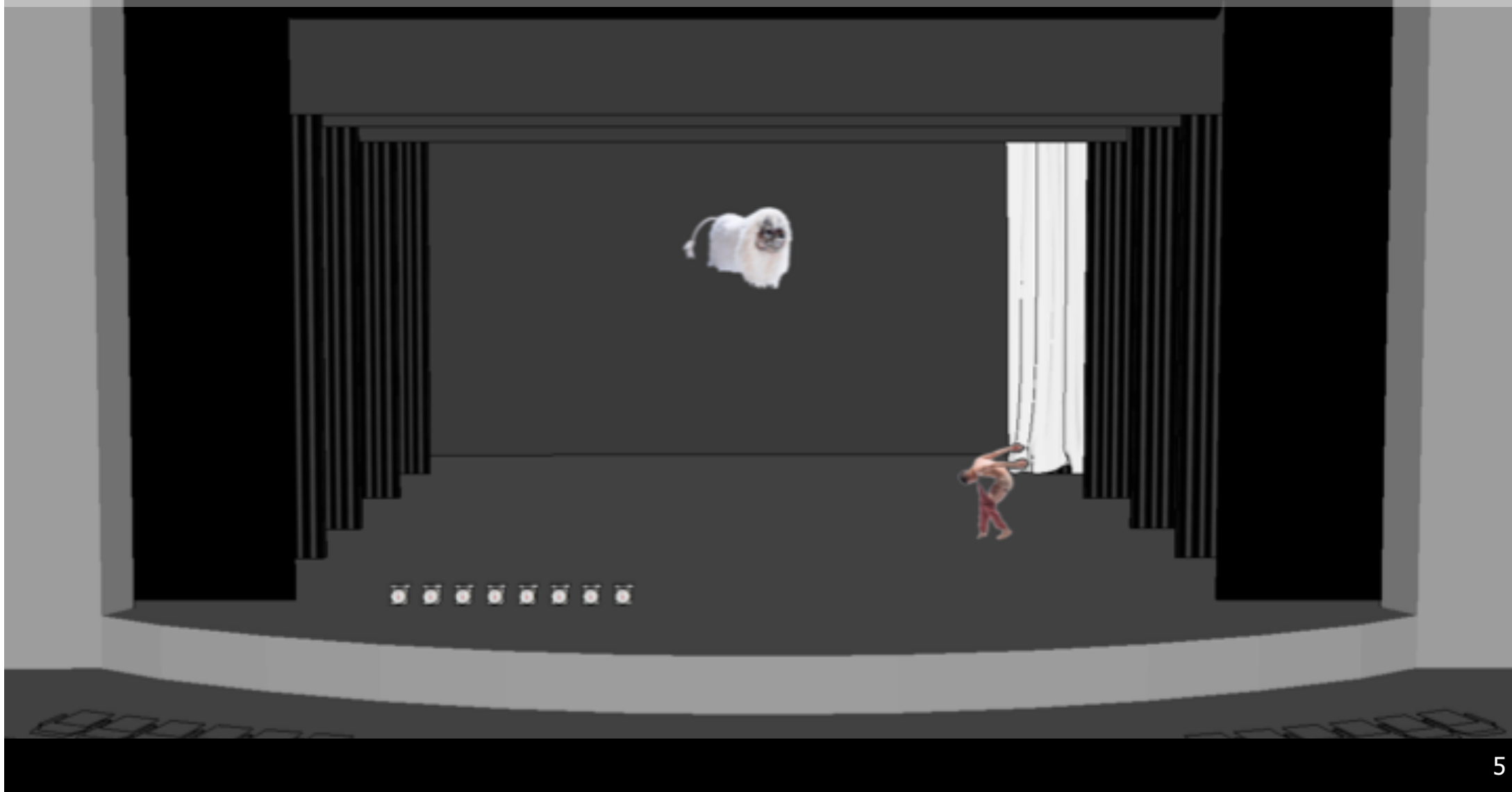
- Proscenium stage, Performing area(Minimum): width 14 ~ 16m, depth 9~ 11m

| Contents | Qty. | Unit | Remark |
|--------------------|------|------|---|
| Velour Leg Sets | 4 | Set | Color Black |
| Velour Borders | 4 | EA | Color Black |
| Dance Floor | 1 | Set | Color White / Covered Whole Space |
| Back Drop (CYC) | 1 | EA | Color Black |
| Silk Curtain (Leg) | 1 | EA | Color White The company shall provide only for grand theater |



**** Please Check Up Stage Plan**



■ STAGE PLAN | GRAND THEATER



■ STAGE PLAN | SMALL THEATER



■ PROPS.

| Contents | Qty. | Unit | Remark |
|------------|------|------|---|
| Flashlight | 3 | EA |  |
| Scale | 7 | EA |  |

■ PROPS.

| Contents | Qty. | Unit | Remark |
|--------------------|------|------|--|
| Lion Dance Costume | 1 | EA | <p>2 X Flying bars to hang the lion dance costume **Check the photo of the lion hanged on the wire</p> <div data-bbox="714 651 1319 997" data-label="Image"> </div> <div data-bbox="714 1003 1319 1437" data-label="Image"> </div> <div data-bbox="1344 651 2123 1433" data-label="Image"> </div> |

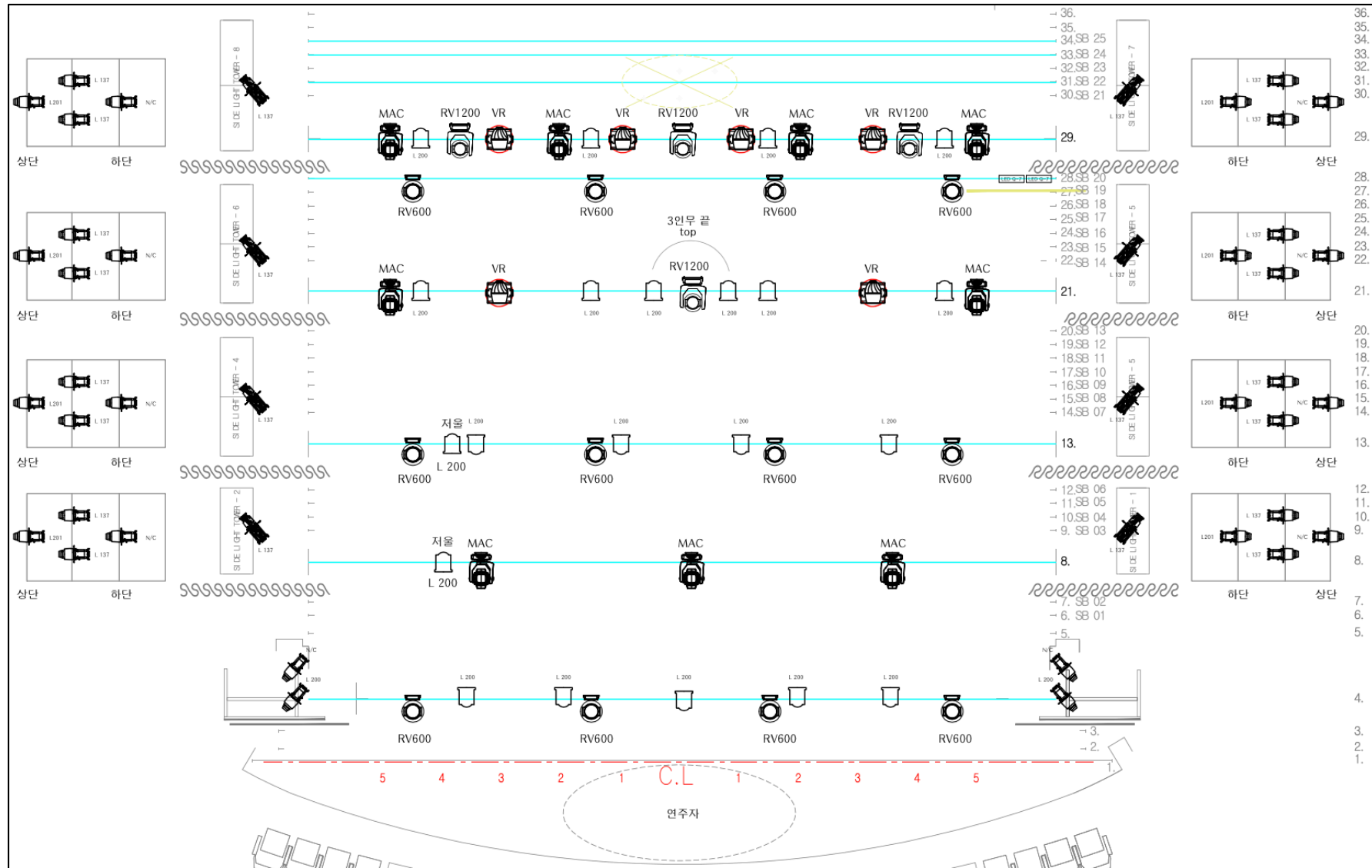
■ LIGHTING

- LX plan will be sent with the fixtures available
- Please send me your venue LX rider
- LX designer will accompany
- The venue must provide exact light equipment specified on the **technical rider**

| Contents | Qty. | Unit | Remark |
|-----------------------------|------|------|--|
| Fresnel 2kw | 21 | EA | |
| Sourcefour | 36 | EA | |
| Sourcefour zoom 2050 | 8 | EA | |
| Vari 3500 | 6 | EA | |
| Robin 600 | 12 | EA | |
| Robin 1200 | 4 | EA | |
| Mac 700 | 9 | EA | |
| MR 16 | 8 | EA | |
| Side tower | 8 | EA | |
| Smoke machines(ZR MK) + fan | 2 | EA | Might need 2 xSmoke machines depends on the size of the venue. |
| Console | 1 | EA | DMX Protocol Computer Lighting Board(Grand MA2, ETC ION, etc.) |
| Cable & Color Filter...etc. | 1 | Set | It's up to lighting design. |

**** We need a equipment(system) which can rig lights and connect circuit in the venue.**

**** The type and quantity of equipment may change depending on the venue.**

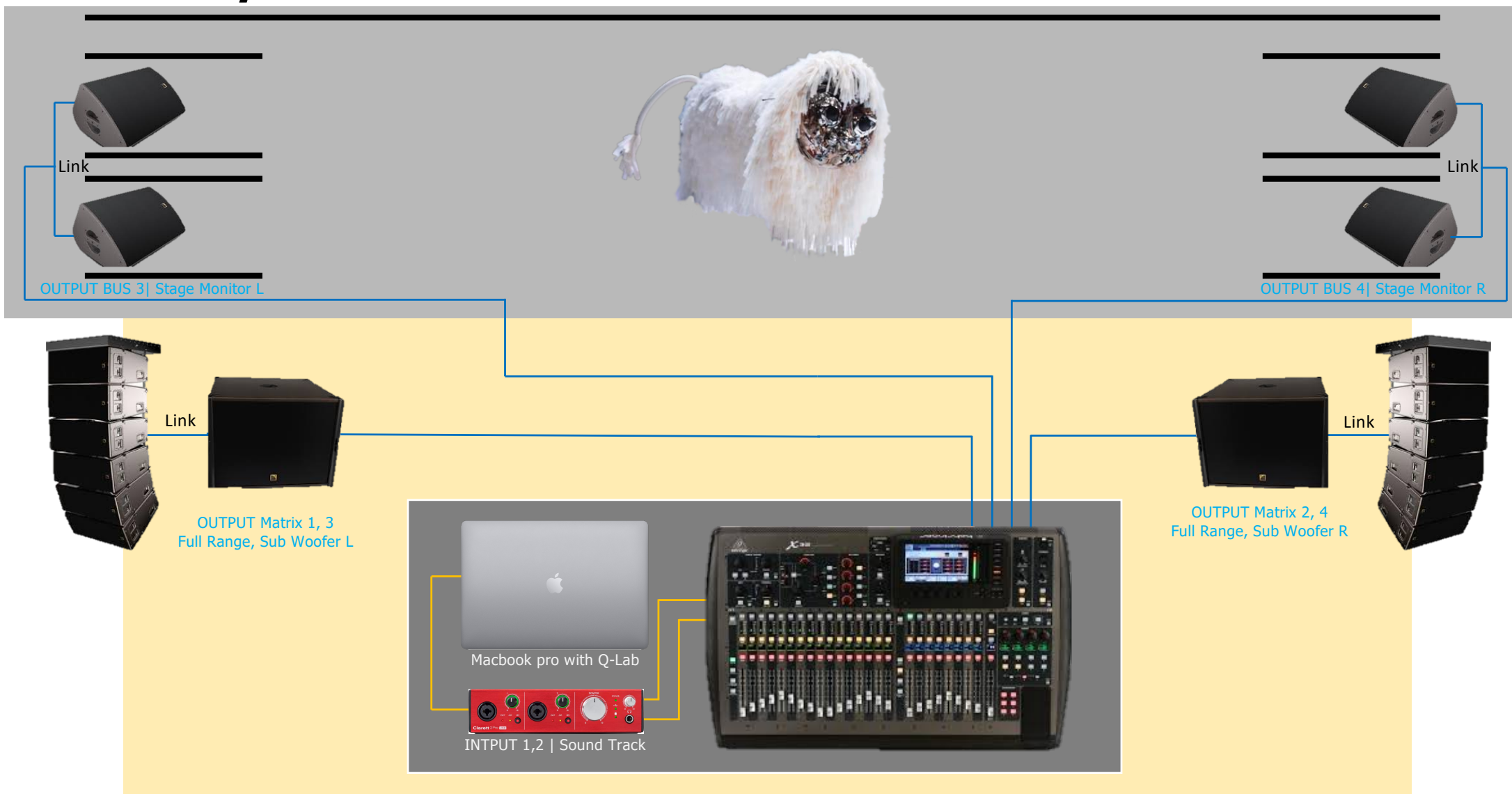


■ SOUND EQUIPMENT

| Contents | Qty. | Unit | Remark |
|------------------|------|------|---|
| Main Speaker | 1 | Set | L, R, Sub Woofer |
| Monitor Speaker | 4 | EA | For the dancer |
| Playback lab top | 1 | EA | With Qlab(licensed) |
| Interface | 1 | EA | USB type, 2ch out |
| Intercom systme | 1 | Set | Wireless Headset 2EA (Stage) / Wired Headset 2EA (Light, sound) |
| Digital Console | 1 | EA | Use theater equipment |
| Cable...etc. | 1 | Set | |

**** The type and quantity of equipment may change depending on the venue.**

■ OUT / INPUT DIAGRAM



■ LOCAL PERSONNEL

- Stage
Enough Stage Hands for the set up(2 person Stage progressing during the show)
- Lighting
Enough Lighting Engineer for the set up
1 Operator & Programer - progressing during the show
- Sound
1 Sound Engineer - Stage progressing during the show
1 Sound Operator - Stage progressing during the show
- Interpreter
1 Stage & Sound Technical Interpreter
1 Lighting Technical Interpreter
****fluent in Korean and English to help out with tech discussions onsite
(set-up & performance), master Class and Q&A**

SCHEDULE

| DAY 1 | | | | | | | | | | | | | | | |
|------------|---|-------|-------|-------|-------|------------|-------|-------|-------|-------|-------|-------|-------|-------|--|
| Time | 9:00 | 10:00 | 11:00 | 12:00 | 13:00 | 14:00 | 15:00 | 16:00 | 17:00 | 18:00 | 19:00 | 20:00 | 21:00 | 22:00 | |
| Light | Light Focusing | | | | Lunch | Programing | | | | OFF | | | | | |
| Stage | Stage Marking & Check Judo Mat | | | | | Spiking | | | | OFF | | | | | |
| Sound | OFF | | | | | | | | | | | | | | |
| Performaer | DAY OFF | | | | | | | | | | | | | | |
| Remark | Please carry out basic setup before the Korean team comes to the theater. | | | | | | | | | | | | | | |

| DAY 2 | | | | | | | | | | | | | | |
|------------|-------------------------|-----------------|-------|-------|-------|----------------------|-------|--------------------|-------|--------|--------------------|-----------|------------|-------|
| Time | 9:00 | 10:00 | 11:00 | 12:00 | 13:00 | 14:00 | 15:00 | 16:00 | 17:00 | 18:00 | 19:00 | 20:00 | 21:00 | 22:00 |
| Light | Programing | | | | Lunch | Programing | | Check lighting cue | | Dinner | stand by Rehearsal | Rehearsal | Programing | |
| Stage | Clean Up & Check Safety | | | | | Assist Sound Tune | | Spacing | | | | | Check Note | |
| Sound | OFF | Build up system | | | | Volum Check | | Playing MR | | | | | | |
| Performaer | OFF | | | | | Warm up on the stage | | Spacing | | | | | | |
| Remark | | | | | | | | | | | | | | |

| DAY 3 | | | | | | | | | | | | | | |
|------------|-------------------------|-------|-------|-------|-------|--------------|--------------------|-----------|-------|--------|---------------|-------|--------|-------|
| Time | 9:00 | 10:00 | 11:00 | 12:00 | 13:00 | 14:00 | 15:00 | 16:00 | 17:00 | 18:00 | 19:00 | 20:00 | 21:00 | 22:00 |
| Light | Programing | | | | Lunch | Programing | stand by Rehearsal | Rehearsal | Note | Dinner | stand by Show | Show | etc... | |
| Stage | Clean Up & Check Safety | | | | | Check detail | | | | | | | | |
| Sound | OFF | | | | | System Check | | | | | | | | |
| Performaer | OFF | | | | | Warm up | | | | | | | | |
| Remark | | | | | | | | | | | | | | |

■ BACK STAGE

- **DRESSING / MANAGEMENT SPACE:**

3 dressing rooms. (1 Choreographer, 1 dancer, 1 technical staff)

All equipment with sufficient tables, chairs, mirrors (at least 1full length mirror per dressing room), and costume racks.

Rest rooms (not to be shared with the public) with showers required.

2 Hangers (any type).

- **WARDROBE**

1 wardrobe person for light repairs and washing

1 iron, 1 ironing board, steamer, sewing machine (for light repairs)

Daily laundry of costumes from 1st day of setup

- **OFFICE ROOM for COMPANY DIRECTOR / MANAGER / DESIGNERS:**

Equipped with copier, printer and Internet line or wireless LAN requested.

Lockable space for valuables and props is required.

- **HOSPITALITY**

Bottled water necessary for all rehearsals and performances

Sinks with hot and cold running water, and non-public access toilets and showers nearby.

Towels for each dancers.

- **Simple hospitality required for whole company:**

Coffee & tea service, soft drinks, orange juice, fruit baskets (season fruits), vegetable platters, crackers, cookies, and other light snacks.

- **HEAT & COOLING:**

Stage and dressing areas must be properly heated or air conditioned to not less than 72 degrees F (22c) and not more than 80 degrees F (26c).

- **SECURITY**

Security personnel must be present to protect the safety & privacy of personnel and belongings.

A person in a dark suit is lying on a blue surface, reaching up towards a large, illuminated, white, feathered structure. The structure is covered in many small, white, rectangular pieces, possibly paper or fabric, and is lit from below, creating a warm glow. The background is dark, and the overall scene has a dramatic, artistic feel.

THANK YOU